



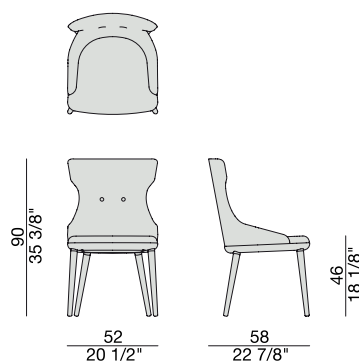
Sedia con struttura in massello di noce canaletta o frassino e rivestimento nei tessuti della collezione. Possibilità di ordinare schienale e bottoni tono su tono o in contrasto.

Chair with frame in solid canaletta walnut or ash and cover in the fabrics of the collection. The back and the buttons could be ton sur ton or in contrast.

Stuhl mit Gestell aus massivem Nussbaum Canaletta oder Esche und Bezug in den Stoffen der Kollektion. Mit der Möglichkeit die Rück und Knöpfen im selben Stoff oder im Kontraststoff zu machen.

Chaise avec structure en noyer canaletta massif ou frêne et revêtement dans les tissus de la collection. Le dossier et les boutons peuvent être ton sur ton ou en contraste.

Silla con estructura en nogal canaletta o fresno macizo y revestimiento en las telas de la colección. Respaldo y botones en la misma tela del asiento o en contraste.



ANDY BRACCIOLI

C. Ballabio

2015

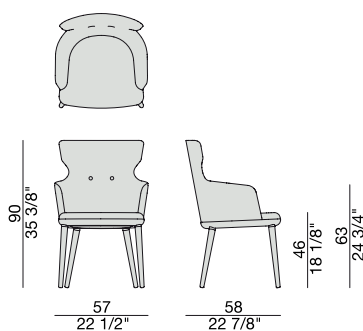
Sedia con braccioli con struttura in massello di noce canaletta o frassino e rivestimento nei tessuti della collezione. Possibilità di ordinare schienale e bottoni tono su tono o in contrasto.

Chair with arms with frame in canaletta walnut or ash and seat covered in the fabrics of the collection. The buttons could be ton sur ton or in contrast.

Stuhl mit Lehnen mit Gestell aus massivem Nussbaum Canaletta oder Esche und Bezug in den Stoffen der Kollektion. Mit der Möglichkeit die Knöpfe im selben Stoff oder im Kontraststoff zu machen.

Chaise avec accoudoirs avec structure en noyer canaletta ou frêne massif et siège revêtu dans les tissus de la collection. Les boutons peuvent être ton sur ton ou en contraste.

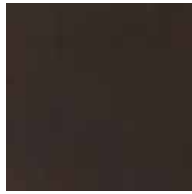
Silla con brazos con estructura en nogal canaletta o fresno macizo y asiento revestido en las telas de la colección. Botones en la misma tela del asiento o en contraste.



ESSENZE | *Essences*



Noce Canaletta
Canaletta Walnut



Noce Canaletta
Canaletta Walnut
tinto/stained moka



Noce Canaletta
Canaletta Walnut
tinto/stained wengé



Frassino Naturale
Natural Ash



Frassino
Ash
tinto/stained moka



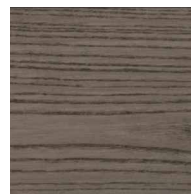
Frassino
Ash
*tinto noce canaletta
canaletta walnut stained*



Frassino
Ash
tinto/stained wengé

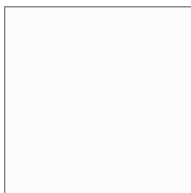


Frassino
Ash
tinto/stained canapa

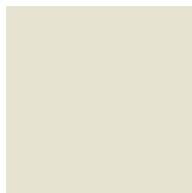


Frassino
Ash
tinto/stained caffè

LACCATO OPACO PORO CHIUSO | *Matt lacquered closed pore*



Bianco
White
(RAL 9016)



Avorio
Ivory
(RAL 1013)



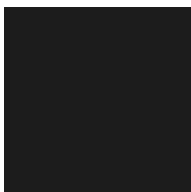
Argilla
Mud
(RAL 7006)



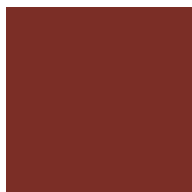
Piombo
Lead
(NCS S5005G20Y)



Cioccolato
Chocolate
(RAL 8019)



Nero
Black
(RAL 9005)



Granata
Garnet red
(NCS S4050Y90R)



Pistacchio
Pistachio green
(PANTONE 5825)

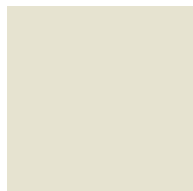


Avio
Aviation blue
(PANTONE 5415)

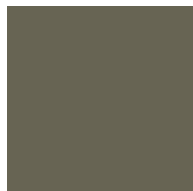
LACCATO OPACO PORO APERTO | *Matte lacquered open pore*



Bianco
White
(RAL 9016)



Avorio
Ivory
(RAL 1013)



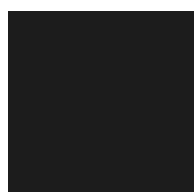
Argilla
Mud
(RAL 7006)



Piombo
Lead
(NCS S5005G20Y)



Cioccolato
Chocolate
(RAL 8019)



Nero
Black
(RAL 9005)



Granata
Garnet red
(NCS S4050Y90R)



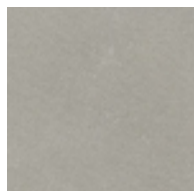
Pistacchio
Pistachio green
(PANTONE 5825)



Avio
Aviation blue
(PANTONE 5415)

PELLE | *Leather*

Categoria LUX



Nabuk
2107

Categoria PLUS



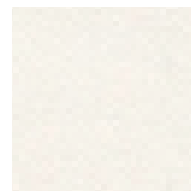
Pelle PLUS
35

Categoria PELLE



Pelle
D58

Categoria EXTRA



Pelle EXTRA
L 635

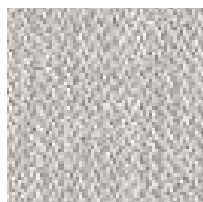
RIVESTIMENTO | Cover

Categoria A



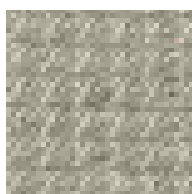
Hallingdal 65

Categoria B



Rabat

Categoria C



Fashion



Moran



Thalys



Velvet



Wool

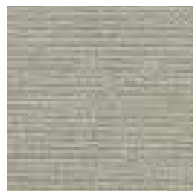
Categoria D



Astra



Ecopelle



Range



Tress

Categoria E



Cotone



Dorian



In Bianco/Calico

Categoria COM

Disponibile con tessuto fornito dal cliente. Tessuto richiesto cm. 150 x 140.

Available with fabric supplied by the customer. Fabric needed cm 150 x 140.

Verfügbar mit Kundenstoff cm. 150 x 140.

Disponible avec tissu du client cm. 150 x 140.

Disponible con tela suministrada por el cliente. Tela necesaria cm. 150 x 140.