

# ARLEKIN

E. Gottein - G. F. Coltella

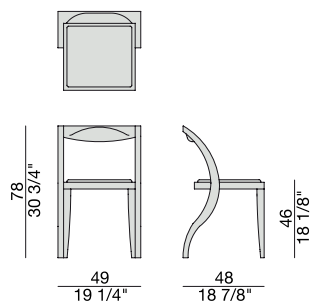
Sedia con struttura in massello di noce canaletta e rivestimento nei tessuti della collezione.

*Chair with frame in solid canaletta walnut and cover in the fabrics of the collection.*

*Stuhl mit Gestell aus massivem Nussbaum Canaletta und Bezug in den Stoffen der Kollektion.*

*Chaise avec structure en noyer canaletta massif et revêtement dans les tissus de la collection.*

*Silla con estructura en nogal canaletta macizo y revestimiento en las telas de la colección.*



## ESSENZE | *Essences*



Noce Canaletta  
Canaletta Walnut

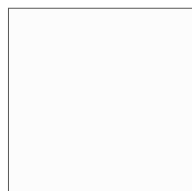


Noce Canaletta  
Canaletta Walnut  
*tinto/stained moka*

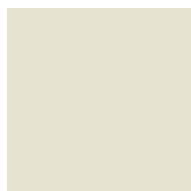


Noce Canaletta  
Canaletta Walnut  
*tinto/stained wengé*

## LACCATO OPACO PORO CHIUSO | *Matt lacquered closed pore*



Bianco  
White  
(RAL 9016)



Avorio  
Ivory  
(RAL 1013)



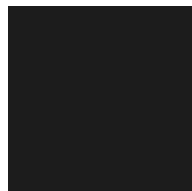
Argilla  
Mud  
(RAL 7006)



Piombo  
Lead  
(NCS S5005G20Y)



Cioccolato  
Chocolate  
(RAL 8019)



Nero  
Black  
(RAL 9005)



Granata  
Garnet red  
(NCS S4050Y90R)



Pistacchio  
Pistachio green  
(PANTONE 5825)



Avio  
Aviation blue  
(PANTONE 5415)

## PELLE | *Leather*

### *Categoria LUX*



Nabuk

### *Categoria PLUS*



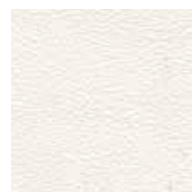
Pelle PLUS

### *Categoria PELLE*



Pelle

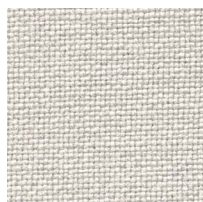
### *Categoria EXTRA*



Pelle EXTRA

## RIVESTIMENTO | Cover

### Categoria A



Hallingdal 65

### Categoria B



Rabat

### Categoria C



Fashion



Moran



Thalys



Velvet

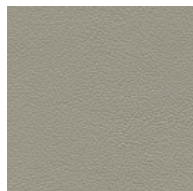


Wool

### Categoria D



Astra



Ecopelle

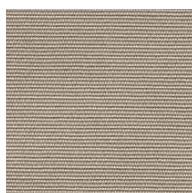


Range



Tress

### Categoria E



Cotone



Dorian



In Bianco/Calico

### Categoria COM

Disponibile con tessuto fornito dal cliente. Tessuto richiesto cm. 60 x 140.

*Available with fabric supplied by the customer. Fabric needed cm 60 x 140.*

Verfügbar mit Kundenstoff cm. 60 x 140.

*Disponible avec tissu du client cm. 60 x 140.*

Disponibile con tela suministrada por el cliente. Tela necesaria cm. 60 x 140.