



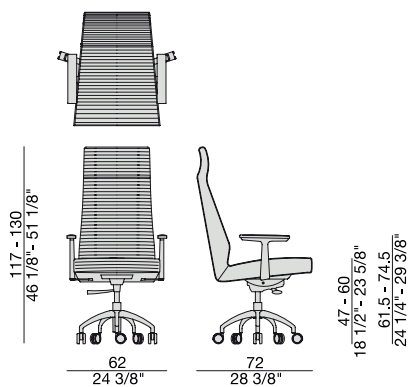
Poltrona direzionale girevole con base in metallo a 5 razze su ruote, braccioli in massello di noce canaletta e rivestimento nei tessuti della collezione. Possibilità di combinare diversi tessuti tra interno ed esterno. Il tessuto della parte frontale presenta sempre impuntura orizzontale.

Executive swiveling armchair with five stars feet on castors, armrests in solid canaletta walnut and cover in the fabrics of the collection. It is possible to combine different fabrics for inside and outside. The fabric used for the front part of the seat and the back always has the horizontal stitching.

Chef- drehbar Sessel mit 5-Speichen Metallgestell, Armlehnen aus massivem Nussbaum Canaletta und Bezug in den Stoffen der Kollektion. Verschiedene Stoffkombination zwischen dem innen und außen- Bezug sind möglich. Der Stoff hat für die Sitzteile vorne und hinten immer horizontale Naht.

Fauteuil pivotante de direction avec base en métal, roues à cinq branches, bras en noyer canaletta massif et revêtement dans les tissus de la collection. Possibilité de combiner différents tissus entre la partie interne et externe. Le tissu utilisé pour la partie frontale de l'assise et du dossier a toujours la couture horizontale.

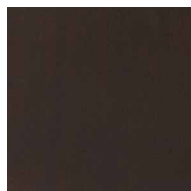
Silla de dirección giratoria con base en metal con ruedas, apoya brazos en nogal canaletta macizo y revestimiento en las telas de la colección. Es posible combinar diferentes telas entre interior y exterior. La tela utilizada en la parte frontal siempre tiene costura horizontal.



ESSENZE | *Essences*



Noce Canaletta
Canaletta Walnut



Noce Canaletta
Canaletta Walnut
tinto/stained moka



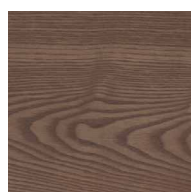
Noce Canaletta
Canaletta Walnut
tinto/stained wengé



Frassino Naturale
Natural Ash



Frassino
Ash
tinto/stained moka

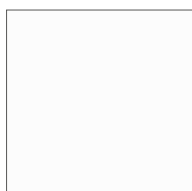


Frassino
Ash
*tinto noce canaletta
canaletta walnut stained*

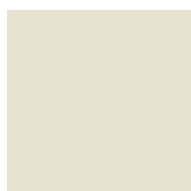


Frassino
Ash
tinto/stained wengé

LACCATO OPACO PORO CHIUSO | *Matt lacquered closed pore*



Bianco
White
(RAL 9016)



Avorio
Ivory
(RAL 1013)



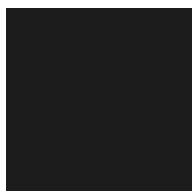
Argilla
Mud
(RAL 7006)



Piombo
Lead
(NCS S5005G20Y)



Cioccolato
Chocolate
(RAL 8019)



Nero
Black
(RAL 9005)



Granata
Garnet red
(NCS S4050Y90R)

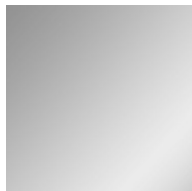


Pistacchio
Pistachio green
(PANTONE 5825)



Avio
Aviation blue
(PANTONE 5415)

METALLO | *Metal*



Alluminio lucido
Shiny aluminium

PELLE | *Leather*

Categoria LUX



Nabuk
2107

Categoria PLUS



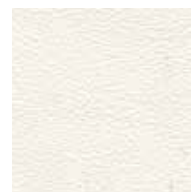
Pelle PLUS
35

Categoria PELLE



Pelle
D58

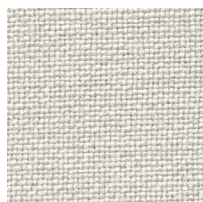
Categoria EXTRA



Pelle EXTRA
L 635

RIVESTIMENTO | Cover

Categoria A



Hallingdal 65

Categoria B



Rabat

Categoria C



Fashion



Moran



Thalys



Velvet



Wool

Categoria D



Astra



Ecopelle

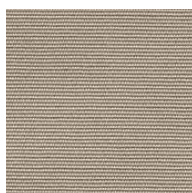


Range



Tress

Categoria E



Cotone



Dorian



In Bianco/Calico

Categoria COM

Disponibile con tessuto fornito dal cliente. Tessuto richiesto cm. 180 x 140.

Available with fabric supplied by the customer. Fabric needed cm 180 x 140.

Verfügbar mit Kundenstoff cm. 180 x 140.

Disponible avec tissu du client cm. 180 x 140.

Disponible con tela suministrada por el cliente. Tela necesaria cm. 180 x 140.