

LORETTA

S. Bigi

2015



porada

LORETTA

S. Bigi

2015

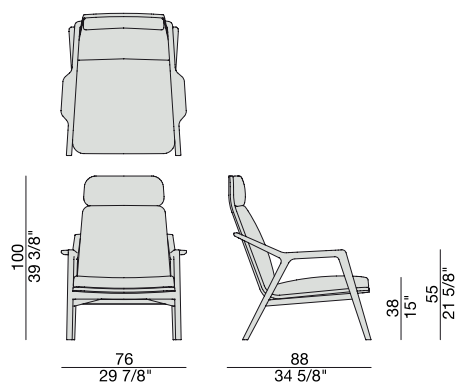
Poltrona con struttura in massello di frassino e rivestimento nei tessuti della collezione.

Armchair with frame in solid ash and cover in the fabric of the collection.

Sessel mit Gestell aus massiver Esche und Bezug in den Stoffen der Kollektion.

Fauteuil fauteuil avec structure en frêne massif et revêtement dans les tissus de la collection.

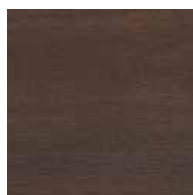
Butaca con estructura en fresno macizo y revestimiento en las telas de la colección.



ESSENZE | *Essences*



Frassino Naturale
Natural Ash



Frassino
Ash
tinto/stained moka



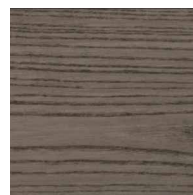
Frassino
Ash
tinto noce canaletta
canaletta walnut stained



Frassino
Ash
tinto/stained wenge



Frassino
Ash
tinto/stained canapa

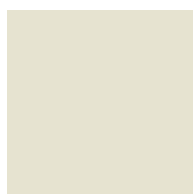


Frassino
Ash
tinto/stained caffè

LACCATO OPACO PORO APERTO | *Matt lacquered open pore*



Bianco
White
(RAL 9016)



Avorio
Ivory
(RAL 1013)



Argilla
Mud
(RAL 7006)



Piombo
Lead
(NCS S5005G20Y)



Cioccolato
Chocolate
(RAL 8019)



Nero
Black
(RAL 9005)



Granata
Garnet red
(NCS S4050Y90R)



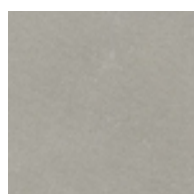
Pistacchio
Pistachio green
(PANTONE 5825)



Avio
Aviation blue
(PANTONE 5415)

PELLE | *Leather*

Categoria LUX



Nabuk

Categoria PLUS



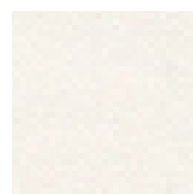
Pelle PLUS

Categoria PELLE



Pelle

Categoria EXTRA



Pelle EXTRA

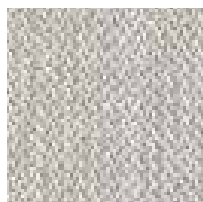
RIVESTIMENTO | *Cover*

Categoria A



Hallingdal 65

Categoria B



Rabat

Categoria C



Fashion



Moran



Thalys



Velvet



Wool

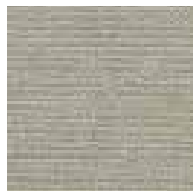
Categoria D



Astra



Ecopelle



Range



Tress

Categoria E



Cotone



Dorian



In Bianco/Calico

Categoria COM

Disponibile con tessuto fornito dal cliente. Tessuto richiesto cm. 290 x 140.

Available with fabric supplied by the customer. Fabric needed cm 290 x 140.

Verfügbar mit Kundenstoff cm. 290 x 140.

Disponible avec tissu du client cm. 290 x 140.

Disponibile con tela suministrada por el cliente. Tela necesaria cm. 290 x 140.