

m o o o i[®]



Salago

by Danny Fang

The Salago lamp by Danny Fang is born out of his fascination for the timeless value of mastering a craft in contrasts with the quick pace of mass production. By combining the techniques of Paper Mache and paper pulping he creates a lamp with a strong structure and incredibly light body.

Designer	Danny Fang
Year of design	2013
Material	Paper pulp, acrylic diffuser

m o o o i[®]

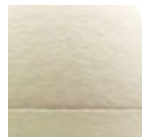
Additional

Salago lamps are produced by pulping paper over a mould. Each lamp is unique and produced by hand. Salago is meant for use with CFL light sources.

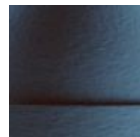
colours



green
RAL 6021



natural
RAL 1013



dark blue
RAL 5008

technical



S: E14 x 1 max 15W
M: E27 x 1 max 23W (incandescent type A)
L: E27 x 1 max 23W (incandescent type A)

Cable length 4M (grey textile)
10M cable available on request
Matching Paper Pulp Canopy

*Not yet cULus listed though suitable
for the North American market.*

packaging

Salago small

H 42 cm | 16,5"
W 42 cm | 16,5"
D 42 cm | 16,5"

Colli 1/1

Product weight:
2,5 KG | 5,5lb

With packaging:
5 KG | 11 lb

Salago medium

H 57 cm | 22,4"
W 57 cm | 22,4"
D 57 cm | 22,4"

Colli 1/1

Product weight:
4 KG | 8,8 lb

With packaging:
10 KG | 22 lb

Salago large

H 77 cm | 30,3"
W 82 cm | 32,3"
D 82 cm | 32,3"

Colli 1/1

Product weight:
6 KG | 13,2 lb

With packaging:
12 KG | 26,5 lb

cleaning instructions

Can be effectively cleaned using a regular household dust cloth or feather duster. Lightly dust inbetween each component when the lamps are not in use. Moooi recommends always reading the label of any cleaning products you wish to use on or near any item from the Moooi collection. For further information on how to clean this product please contact your nearest Moooi agent or dealer which can be located through our website.

dimensions

