

m o o o i[®]



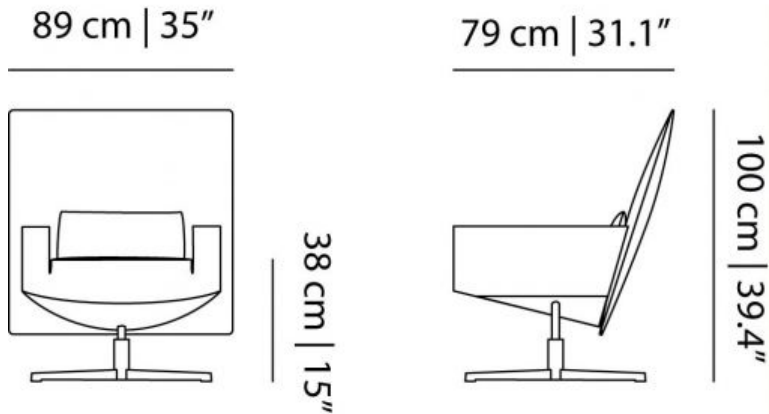
Jackson Chair

by Marcel Wanders

A grand backrest of embroidered and black leather to recline on and swivel whilst sitting comfortably.

| | |
|-----------------------|--|
| Designer | Marcel Wanders |
| Year of design | 2016 |
| Material | Steel, HR foam, Leather |
| Additional | Jackson Footstool can be ordered separately. |

dimensions



Jackson chair & footstool packaging

Jackson Chair

H 100 | 39.4"

W 89 | 35"

D 107 | 32.1"

Jackson Footstool

H 40 | 15.7"

W 58 | 22.8"

D 58 | 22.8"

Signature leather

thickness

1.0 – 1.2 mm

origin

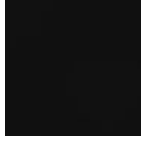
European rawhide, typically from Italy, Germany, Austria, Switzerland and Scandinavia

surface

matte, soft with subtle visible texture

finish

light surface protection



Macchedil, Grezzo

composition

47% co, 20% vi, 18% pi, 8% li, 5% pc, 2% af

abrasion

18.000 martindale

lightfastness 4

firetest

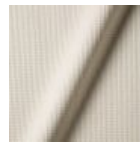
EN1021 I&2



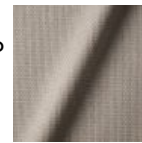
Macchedil Grezzo
Black indigo



Macchedil Grezzo
Pinkish



Macchedil Grezzo
Off white



Macchedil Grezzo
Light grey



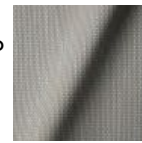
Macchedil Grezzo
Light brown



Macchedil Grezzo
Grey grey



Macchedil Grezzo
Anthracite



Macchedil Grezzo
Blue grey



Macchedil Grezzo
Cappuccino



Macchedil Grezzo
Deepblue

Macchedil, Sottile

composition

49% vi, 24% pl, 21% li, 6% co

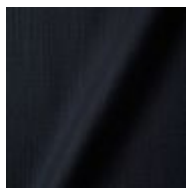
abrasion

30.000 martindale

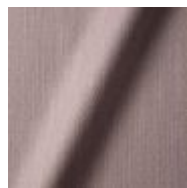
lightfastness 4

firetest

EN1021 I&2



Macchedil Sottile
Black indigo



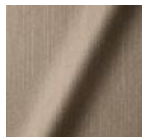
Macchedil Sottile
Pinkish



Macchedil Sottile
Off white



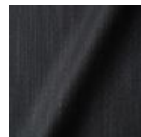
Macchedil Sottile
Light grey



Macchedil Sottile
Light brown



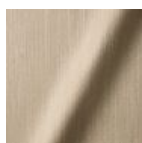
Macchedil Sottile
Grey grey



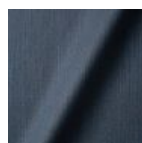
Macchedil Sottile
Anthracite



Macchedil Sottile
Blue grey



Macchedil Sottile
Cappuccino



Macchedil Sottile
Deep blue

Abbracci

composition

100% pl

abrasion

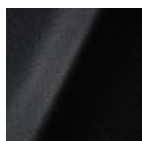
50.000 martindale

lightfastness 4

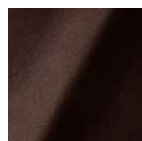
firetest

FR BS5852 0/1

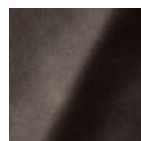
EN1021 1&2



Abbracci
Black



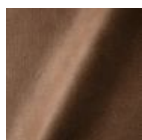
Abbracci
Brown



Abbracci
Grey



Abbracci
Oyster



Abbracci
Taupe

Oray

m o o o i[®]

composition

8% co, 38% vi, 15% pl, 39% li

abrasion

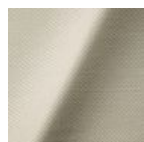
30.000 martindale

lightfastness 4

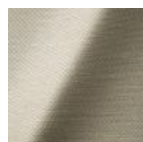
firetest

FR BS5852 0/1

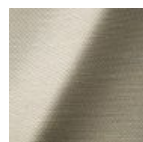
EN 1021 1&2



Oray
Cream



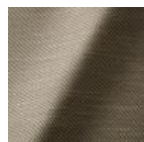
Oray
Sand



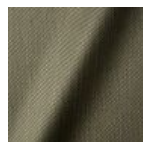
Oray
Rock



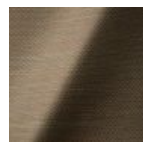
Oray
Mineral



Oray
Gravel



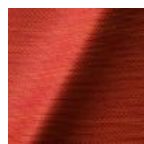
Oray
Dark Gull



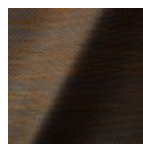
Oray
Copper



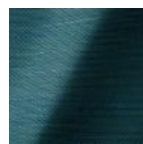
Oray
Rust



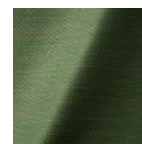
Oray
Flamboyant



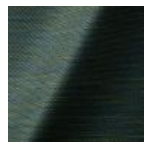
Oray
Oil



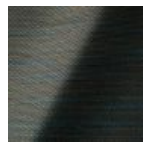
Oray
Aqua



Oray
Peyote



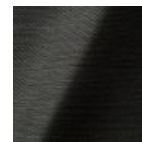
Oray
Ocean



Oray
Metal



Oray
Griffin



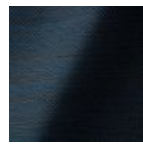
Oray
Dusk



Oray
Chestnut



Oray
Dark



Oray
Indigo



Oray
Ochre

Solis

m o o o i[®]

composition

2% PA 3% PC 30% PL 65% WO

abrasion

40.000 Martindale rubs, EN ISO 12947

lightfastness

Note 5, EN ISO 105-B02

firetest

EN 1021-1/2

US. Cal. Bull. 117-2013

Upon request, with treatment:

BS5852 part 1

BS5852 crib 5



Solis
Crust



Solis
Dawn



Solis
Fog



Solis
Gray



Solis
Paper



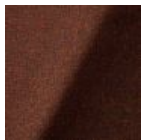
Solis
Rain



Solis
Spencer



Solis
Suit



Solis
Sunset

Bouclé

composition

43% co, 28% pan, 14% pa, 12% vi, 3% pl

abrasion

20.000> martindale

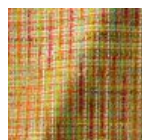
lightfastness 4

firetest

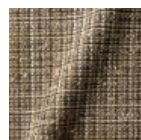
EN1021 1&2



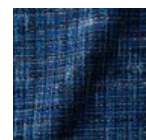
Bouclé
Black white



Bouclé
Rainbow



Bouclé
Brown



Bouclé
Blue

Jacquard andaz

composition:

34% cotton - 30% viscose - 24% linen - 12% polyamide

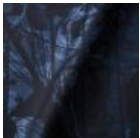
abrasion:

25000 martindale

lightfastness 4-5

firetest:

BS EN 1021 1&2



Jacquard
Andaz

Jaquard Fresco

composition

40% vi ,36% co,14% pl, 10% li

abrasion

20.000> martindale

lightfastness 4-5

firetest

EN1021 1&2



Jaquard
Fresco

Jacquard Old Black & Blue

composition

52% vi, 38% co, 10% li

abrasion

20.000> martindale

lightfastness 4-5

firetest

EN1021 1&2



Jacquard
Old Blue



Jacquard
Old Black

Justo

composition

15% CO, 35% PC, 10% PL, 40% VI

abrasion

50.000 Martindale rubs, EN ISO 12947

lightfastness

Note 5, EN ISO 105-B02

fire test

EN 1021-1/2

US. Cal. Bull. 117-2013

NFPA 260

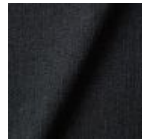
Upon request, with treatment:

BS5852 part1

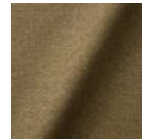
BS5852 crib5



Justo
Alge



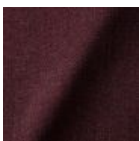
Justo
Bazalt



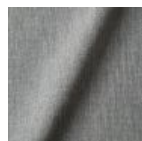
Justo
Bred



Justo
Flod



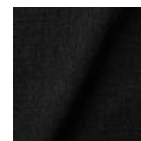
Justo
Hinde



Justo
Lyse



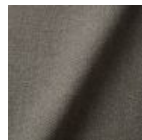
Justo
Muse



Justo
Nat



Justo
Sennep



Justo
Sten

Liscio

m o o o i[®]

composition

35% WO / 35% CV / 21% CO / 9% PA

abrasion

30.000 Martindale

lightfastness

4-6

firetest

US. Cal. Bull. 117-2013

Upon request, with treatment:

BS5852 part I



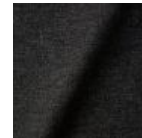
Liscio
**Grigio Blu
Scuro**



Liscio
Grigio Blu



Liscio
Grigio Scuro



Liscio
Muscio Scuro



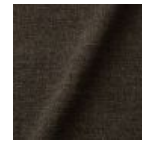
Liscio
Muscio



Liscio
Argento



Liscio
Nebbia



Liscio
Pietra



Liscio
Perla



Liscio
Latte Scuro



Liscio
Latte

Vesper

composition

10% CO, 40% L, 10% PA, 10% PL, 30% VI

abrasion

40.000 Martindale rubs, EN ISO 12947

lightfastness

Note 5, EN ISO 105-B02

firetest

EN 1021-1/2

US. Cal. Bull. 117-2013

Upon request, with treatment:

BS5852 part I

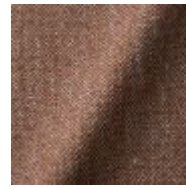
BS5852 crib5



Vesper
Aluminium



Vesper
Brass



Vesper
Bronze



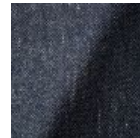
Vesper
Carbon



Vesper
Nickel



Vesper
Silver



Vesper
Steel



Vesper
Titan

Twill

composition

72% wo, 8% pa, 20% pl

abrasion

75.000 martindale

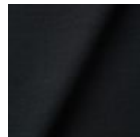
lightfastness 5

firetest

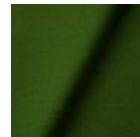
EN1021 I&2



Twill
Caviar



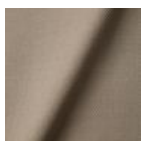
Twill
Graphite



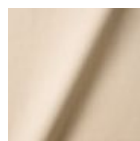
Twill
Grass



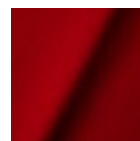
Twill
Grey



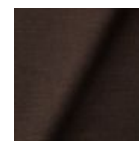
Twill
Linen



Twill
Natural



Twill
Passion



Twill
Walnut

Twill Melange

m o o o i[®]

composition

60% WO / 20% PES / 20% PA

abrasion

80.000 martindale

lightfastness 6-7

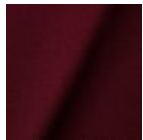
firetest

EN1021-1/2

US. Cal. Bull. 117-2013

BS5852 part I

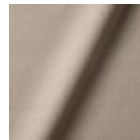
DIN 4102-B2



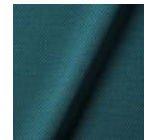
Twill Melange
Chili



Twill Melange
Dust



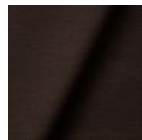
Twill Melange
Flour



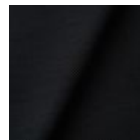
Twill Melange
Lagoon



Twill Melange
Lavender



Twill Melange
Peat



Twill Melange
Slate



Twill Melange
Twig

Trickle

composition

60% WO / 20% PES / 20% PA

abrasion

80.000 martindale

lightfastness 6

firetest

EN1021-1/2

US. Cal. Bull. 117-2013

BS5852 part I

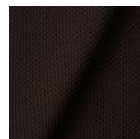
DIN 4102-B2



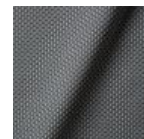
Trickle
Flour



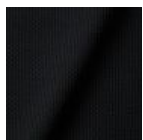
Trickle
Twig



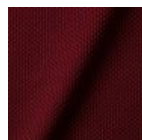
Trickle
Peat



Trickle
Dust



Trickle
Slate



Trickle
Chili



Trickle
Lavender



Trickle
Lagoon

Velour

composition

77% wo, 8% pa, 15% pl

abrasion

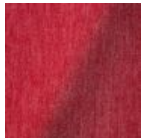
100.000 martindale

lightfastness 7

firetest

FR BS5852 0/1

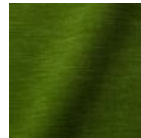
EN1021 1&2



Velour
Coral



Velour
Stone



Velour
Moss

Extinct Animal Collection - Dodo Pavone

composition

12% CO 88% PL

abrasion

40.000 Martindale rubs, EN ISO 12947

lightfastness

Note 5, EN ISO 105-B02

firetest

US. Cal. Bull. 117-2013

Upon request, with treatment:

BS5852 part I



Kvadrat Fabrics



Kvadrat Fabrics

Selected Moooi products can be upholstered with a collection of Kvadrat fabrics. Kvadrat designs high-quality upholstery, in an extensive range of colours and textures.

Go to our [Kvadrat fabrics page](#) for a full overview of all fabric families you can choose from.

