

m o o o i[®]



Nest Chair

by Marcel Wanders

The Nest Chair's linear, clear metal structure lifts the plumpest and softest cushions from the floor, creating a comfy, elevated nest for one or more people.

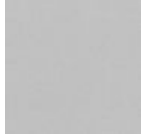
Designer	Marcel Wanders
Year of design	2013
Material	KTL and powdercoated steelframe (suitable for outdoor use); Mixed foam, feather & fiber flock filling

m o o o i[®]

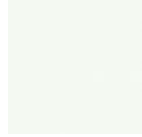
Additional

Nest Chair pillows are connected by zippers. All covers can be removed for cleaning.

Nest Frame



Grey silver
Grey silver (fine
texture mettalic
coating)



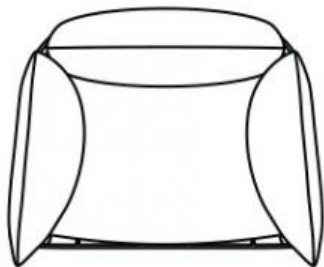
Satin white
Satin white 9016
(high gloss
coating)

cleaning instructions

Moooi recommends using a good furniture polish and a soft cloth. Apply generously in layers to the surface and use the cloth to shine. Do not use abrasive fabrics, gently remove tough stains with warm water and a trusted multi-surface cleaner.

dimensions

110cm | 43,3"



58cm | 22,8"

55cm | 21,7"

88cm | 34,6"

81cm | 31,9"



48cm | 18,9"



Macchedil, Grezzo

composition

47% co, 20% vi, 18% pi, 8% li, 5% pc, 2% af

abrasion

18.000 martindale

lightfastness 4

firetest

EN1021 I&2



Macchedil, Sottile

composition

49% vi, 24% pl, 21% li, 6% co

abrasion

30.000 martindale

lightfastness 4

firetest

EN1021 I&2



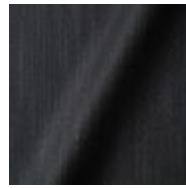
m o o o i[®]



Macchedil Sottile
Light brown



Macchedil Sottile
Grey grey



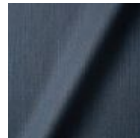
Macchedil Sottile
Anthracite



Macchedil Sottile
Blue grey



Macchedil Sottile
Cappuccino



Macchedil Sottile
Deep blue

Abbracci

composition

100% pl

abrasion

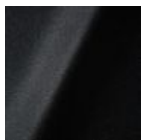
50.000 martindale

lightfastness 4

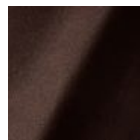
firetest

FR BS5852 0/1

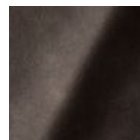
EN1021 I&2



Abbracci
Black



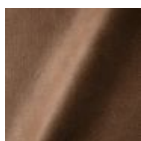
Abbracci
Brown



Abbracci
Grey



Abbracci
Oyster



Abbracci
Taupe

Alfresco

composition

100% Polyester

outdoor suitable

Alfresco cover is suitable for outdoor use, outdoor pillows are available on request.

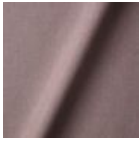
abrasion

50.000 martindale

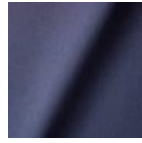
lightfastness 5

Pilling 4

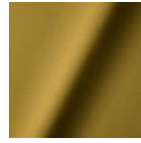
m o o o i[®]



Alfresco
Pirbright



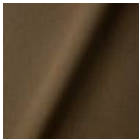
Alfresco
Rock



Alfresco
Ochre



Alfresco
Dazzle



Alfresco
Copper

Oray

composition

8% co, 38% vi, 15% pl, 39% li

abrasion

30.000 martindale

lightfastness 4

firetest

FR BS5852 0/1

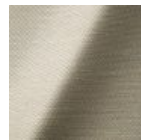
EN 1021 1&2



Oray
Cream



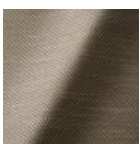
Oray
Sand



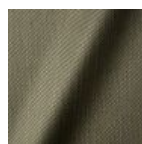
Oray
Rock



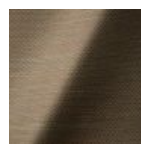
Oray
Mineral



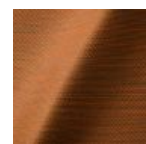
Oray
Gravel



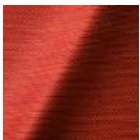
Oray
Dark Gull



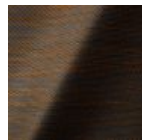
Oray
Copper



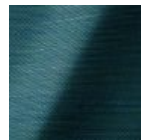
Oray
Rust



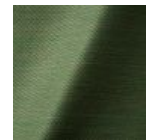
Oray
Flamboyant



Oray
Oil



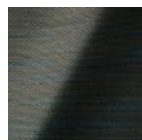
Oray
Aqua



Oray
Peyote



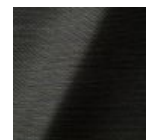
Oray
Ocean



Oray
Metal



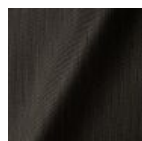
Oray
Griffin



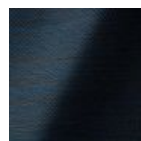
Oray
Dusk



Oray
Chestnut



Oray
Dark



Oray
Indigo



Oray
Ochre

Solis

m o o o i[®]

composition

2% PA 3% PC 30% PL 65% WO

abrasion

40.000 Martindale rubs, EN ISO 12947

lightfastness

Note 5, EN ISO 105-B02

firetest

EN 1021-1/2

US. Cal. Bull. 117-2013

Upon request, with treatment:

BS5852 part 1

BS5852 crib 5



Solis
Crust



Solis
Dawn



Solis
Fog



Solis
Gray



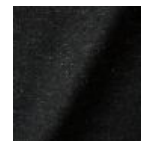
Solis
Paper



Solis
Rain



Solis
Spencer



Solis
Suit



Solis
Sunset

Flower Bits



One Minute



Bouclé

m o o o i[®]

composition

43% co, 28% pan, 14% pa, 12% vi, 3% pl

abrasion

20.000> martindale

lightfastness 4**firetest**

EN1021 I&2



Bouclé
Black white



Bouclé
Rainbow



Bouclé
Brown



Bouclé
Blue

Jacquard andaz

composition:

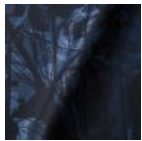
34% cotton - 30% viscose - 24% linen - 12% polyamide

abrasion:

25000 martindale

lightfastness 4-5**firetest:**

BS EN 1021 I&2



Jacquard
Andaz

Jaquard Fresco

composition

40% vi ,36% co,14% pl, 10% li

abrasion

20.000> martindale

lightfastness 4-5**firetest**

EN1021 I&2



Jacquard
Fresco

Jacquard Old Black & Blue

composition

52% vi, 38% co, 10% li

abrasion

20.000> martindale

lightfastness 4-5

firetest

EN1021 1&2



Jacquard
Old Blue



Jacquard
Old Black

Justo

composition

15% CO, 35% PC, 10% PL, 40% VI

abrasion

50.000 Martindale rubs, EN ISO 12947

lightfastness

Note 5, EN ISO 105-B02

fire test

EN 1021-1/2

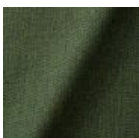
US. Cal. Bull. 117-2013

NFPA 260

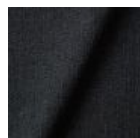
Upon request, with treatment:

BS5852 part1

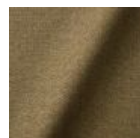
BS5852 crib5



Justo
Alge



Justo
Bazalt

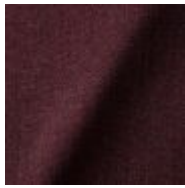


Justo
Bred



Justo
Flod

m o o o i[®]



Justo
Hinde



Justo
Lyse



Justo
Muse



Justo
Nat



Justo
Sennep



Justo
Sten

Liscio

composition

35% WO / 35% CV / 21% CO / 9% PA

abrasion

30.000 Martindale

lightfastness

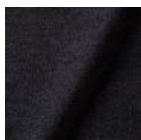
4-6

firetest

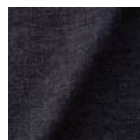
US. Cal. Bull. 117-2013

Upon request, with treatment:

BS5852 part I



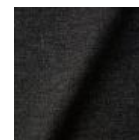
Liscio
**Grigio Blu
Scuro**



Liscio
Grigio Blu



Liscio
Grigio Scuro



Liscio
Muscio Scuro



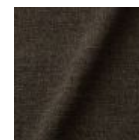
Liscio
Muscio



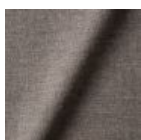
Liscio
Argento



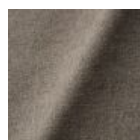
Liscio
Nebbia



Liscio
Pietra



Liscio
Perla



Liscio
Latte Scuro



Liscio
Latte

Softlinen

composition

100% Linen

abrasion

25.000 martindale

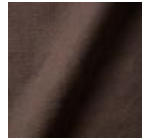
lightfastness 6**firetest**

FR BS5852 0/1

EN1021 I&2



Softlinen
Beige



Softlinen
Brown

Trickle

composition

60% WO / 20% PES / 20% PA

abrasion

80.000 martindale

lightfastness 6**firetest**

EN1021-I/2

US. Cal. Bull. 117-2013

BS5852 part I

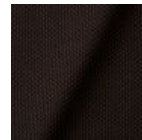
DIN 4102-B2



Trickle
Flour



Trickle
Twig



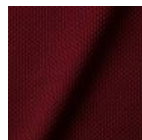
Trickle
Peat



Trickle
Dust



Trickle
Slate



Trickle
Chili



Trickle
Lavender



Trickle
Lagoon

Twill

m o o o i[®]

composition

72% wo, 8% pa, 20% pl

abrasion

75.000 martindale

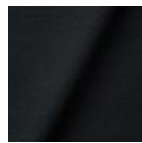
lightfastness 5

firetest

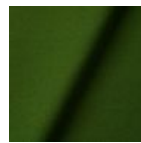
EN1021 I&2



Twill
Caviar



Twill
Graphite



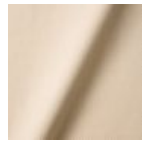
Twill
Grass



Twill
Grey



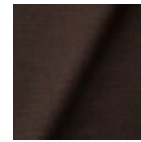
Twill
Linen



Twill
Natural



Twill
Passion



Twill
Walnut

Twill Melange

composition

60% WO / 20% PES / 20% PA

abrasion

80.000 martindale

lightfastness 6-7

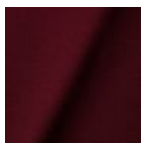
firetest

EN1021-I/2

US. Cal. Bull. 117-2013

BS5852 part I

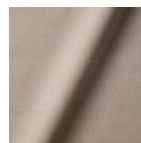
DIN 4102-B2



Twill Melange
Chili



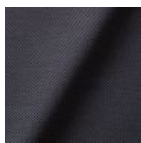
Twill Melange
Dust



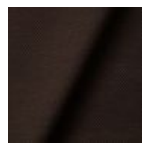
Twill Melange
Flour



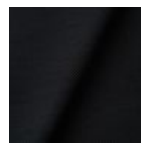
Twill Melange
Lagoon



Twill Melange
Lavender



Twill Melange
Peat



Twill Melange
Slate



Twill Melange
Twig

Vesper

composition

10% CO, 40% L, 10% PA, 10% PL, 30% VI

abrasion

40.000 Martindale rubs, EN ISO 12947

lightfastness

Note 5, EN ISO 105-B02

firetest

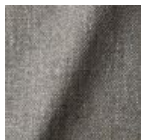
EN 1021-1/2

US. Cal. Bull. 117-2013

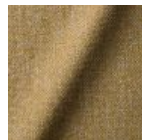
Upon request, with treatment:

BS5852 part I

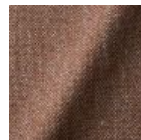
BS5852 crib5



Vesper
Aluminium



Vesper
Brass



Vesper
Bronze



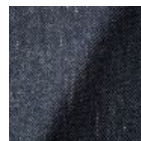
Vesper
Carbon



Vesper
Nickel



Vesper
Silver



Vesper
Steel



Vesper
Titan

Extinct Animal Collection - Dodo Pavone

composition

12% CO 88% PL

abrasion

40.000 Martindale rubs, EN ISO 12947

lightfastness

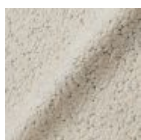
Note 5, EN ISO 105-B02

firetest

US. Cal. Bull. 117-2013

Upon request, with treatment:

BS5852 part I



Kvadrat Fabrics



Kvadrat Fabrics

Selected Moooi products can be upholstered with a collection of Kvadrat fabrics. Kvadrat designs high-quality upholstery, in an extensive range of colours and textures.

Go to our [Kvadrat fabrics page](#) for a full overview of all fabric families you can choose from.

