

m o o o i[®]



Nut Dining Chair

by Marcel Wanders

Sitting in the warm embrace of the Nut dining chair by will make you feel protected and as precious as the most beautiful pearl in the sea. The exquisite flavour of its design and the rich pattern of its textiles distinguish it from the mass.

Designer	Marcel Wanders
Year of design	2013
Material	Oak veneer bent plywood; solid oak legs

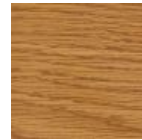
Stain colours



White Wash



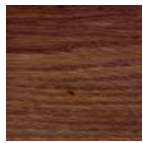
Wenge



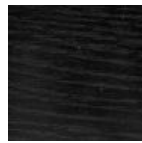
Natural Oil



Grey



Cinnamon



Black Stained

dimensions

49cm | 19,3"

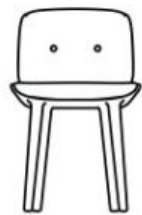


38cm | 15"

76cm | 29,9"



52cm | 20,5"



48cm | 18,9"

Macchedil, Grezzo

m o o o i[®]

composition

47% co, 20% vi, 18% pi, 8% li, 5% pc, 2% af

abrasion

18.000 martindale

lightfastness 4

firetest

EN1021 I&2



Macchedil, Sottile

composition

49% vi, 24% pl, 21% li, 6% co

abrasion

30.000 martindale

lightfastness 4

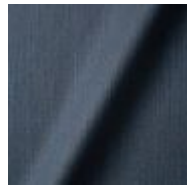
firetest

EN1021 I&2





Macchedil Sottile
Cappuccino



Macchedil Sottile
Deep blue

Abbracci

composition

100% pl

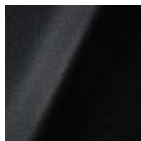
abrasion

50.000 martindale

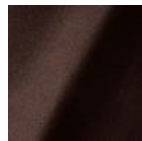
lightfastness 4

firetest

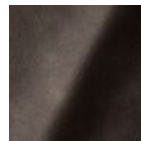
FR BS5852 0/1
EN1021 I&2



Abbracci
Black



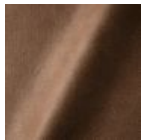
Abbracci
Brown



Abbracci
Grey



Abbracci
Oyster



Abbracci
Taupe

Manga

composition

29% pl, 71% co

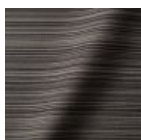
abrasion

40.000 martindale

lightfastness 5

firetest

FR BS5852 0/1
EN1021 I&2



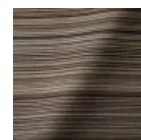
Manga
Grey



Manga
Blue



Manga
Green



Manga
Brown

Oray

composition

8% co, 38% vi, 15% pl, 39% li

abrasion

30.000 martindale

lightfastness 4

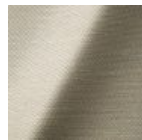
firetest

FR BS5852 0/1

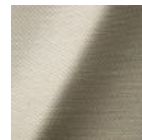
EN 1021 1&2



Oray
Cream



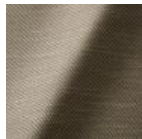
Oray
Sand



Oray
Rock



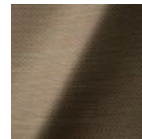
Oray
Mineral



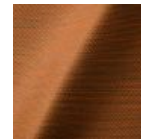
Oray
Gravel



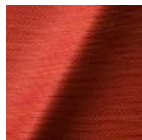
Oray
Dark Gull



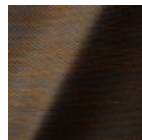
Oray
Copper



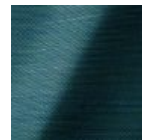
Oray
Rust



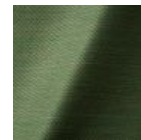
Oray
Flamboyant



Oray
Oil



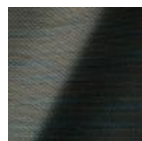
Oray
Aqua



Oray
Peyote



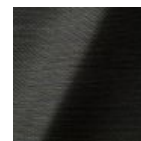
Oray
Ocean



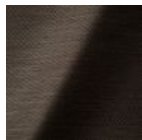
Oray
Metal



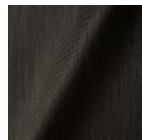
Oray
Griffin



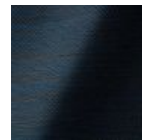
Oray
Dusk



Oray
Chestnut



Oray
Dark



Oray
Indigo



Oray
Ochre

Jacquard andaz

m o o o i[®]

composition:

34% cotton - 30% viscose - 24% linen - 12% polyamide

abrasion:

25000 martindale

lightfastness 4-5

firetest:

BS EN 1021 1&2



Jacquard
Andaz

Jaquard Fresco

composition

40% vi ,36% co,14% pl, 10% li

abrasion

20.000> martindale

lightfastness 4-5

firetest

EN1021 1&2



Jacquard
Fresco

Jacquard Old Black & Blue

composition

52% vi, 38% co, 10% li

abrasion

20.000> martindale

lightfastness 4-5

firetest

EN1021 1&2



Jacquard
Old Blue



Jacquard
Old Black

Justo

composition

15% CO, 35% PC, 10% PL, 40% VI

abrasion

50.000 Martindale rubs, EN ISO 12947

lightfastness

Note 5, EN ISO 105-B02

fire test

EN 1021-1/2

US. Cal. Bull. 117-2013

NFPA 260

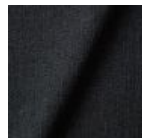
Upon request, with treatment:

BS5852 part 1

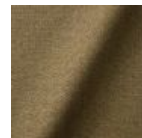
BS5852 crib 5



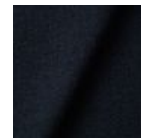
Justo
Alge



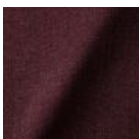
Justo
Bazalt



Justo
Bred



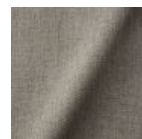
Justo
Flod



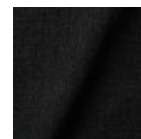
Justo
Hinde



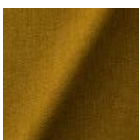
Justo
Lyse



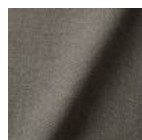
Justo
Muse



Justo
Nat



Justo
Sennep



Justo
Sten

Liscio

m o o o i[®]

composition

35% WO / 35% CV / 21% CO / 9% PA

abrasion

30.000 Martindale

lightfastness

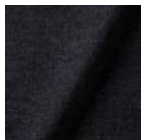
4-6

firetest

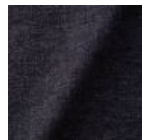
US. Cal. Bull. 117-2013

Upon request, with treatment:

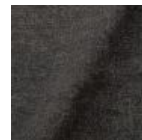
BS5852 part I



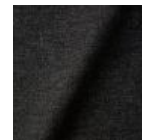
Liscio
**Grigio Blu
Scuro**



Liscio
Grigio Blu



Liscio
Grigio Scuro



Liscio
Muscio Scuro



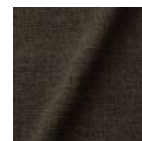
Liscio
Muscio



Liscio
Argento



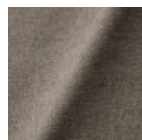
Liscio
Nebbia



Liscio
Pietra



Liscio
Perla



Liscio
Latte Scuro



Liscio
Latte

Trickle

composition

60% WO / 20% PES / 20% PA

abrasion

80.000 martindale

lightfastness 6

firetest

EN1021-1/2

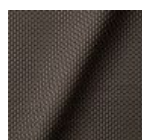
US. Cal. Bull. 117-2013

BS5852 part I

DIN 4102-B2



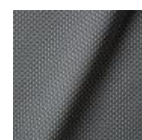
Trickle
Flour



Trickle
Twig



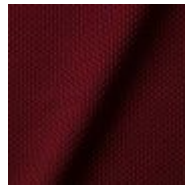
Trickle
Peat



Trickle
Dust



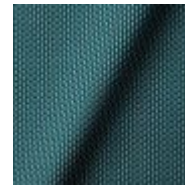
Trickle
Slate



Trickle
Chili



Trickle
Lavender



Trickle
Lagoon

Twill

composition

72% wo, 8% pa, 20% pl

abrasion

75.000 martindale

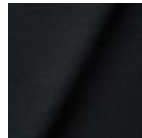
lightfastness 5

firetest

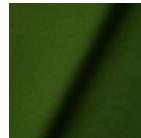
EN1021 I&2



Twill
Caviar



Twill
Graphite



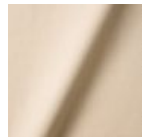
Twill
Grass



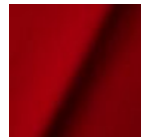
Twill
Grey



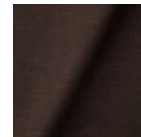
Twill
Linen



Twill
Natural



Twill
Passion



Twill
Walnut

Twill Melange

composition

60% WO / 20% PES / 20% PA

abrasion

80.000 martindale

lightfastness 6-7

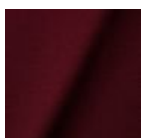
firetest

EN1021-I/2

US. Cal. Bull. 117-2013

BS5852 part I

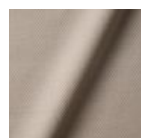
DIN 4102-B2



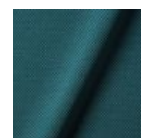
Twill Melange
Chili



Twill Melange
Dust



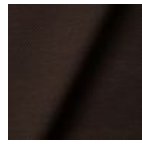
Twill Melange
Flour



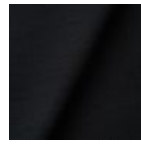
Twill Melange
Lagoon



Twill Melange
Lavender



Twill Melange
Peat



Twill Melange
Slate



Twill Melange
Twig

Velour

composition

77% wo, 8% pa, 15% pl

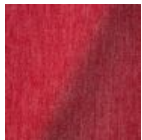
abrasion

100.000 martindale

lightfastness 7

firetest

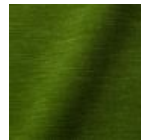
FR BS5852 0/1
EN1021 I&2



Velour
Coral



Velour
Stone



Velour
Moss

Vesper

composition

10% CO, 40% L, 10% PA, 10% PL, 30% VI

abrasion

40.000 Martindale rubs, EN ISO 12947

lightfastness

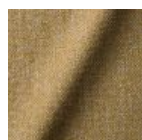
Note 5, EN ISO 105-B02

firetest

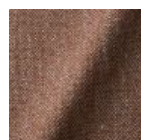
EN 1021-1/2
US. Cal. Bull. 117-2013
Upon request, with treatment:
BS5852 part I
BS5852 crib5



Vesper
Aluminium



Vesper
Brass



Vesper
Bronze



Vesper
Carbon

m o o o i[®]



Vesper
Nickel



Vesper
Silver



Vesper
Steel



Vesper
Titan

Oil

composition:

64% VI / 27% CO / 9% PA.



Extinct Animal Collection - Dodo Pavone

composition

12% CO 88% PL

abrasion

40.000 Martindale rubs, EN ISO 12947

lightfastness

Note 5, EN ISO 105-B02

firetest

US. Cal. Bull. 117-2013

Upon request, with treatment:

BS5852 part I



Arredo Leather

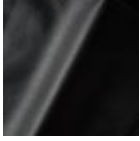
composition

100% semi aniline leather

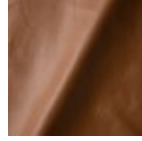
Leather is a natural product, colours may vary from hide to hide.

firetest

EN1021 I&2



Arredo Leather
Black



Arredo Leather
Brown



Arredo Leather
White

Cervino Leather

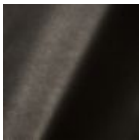
composition

100% aniline leather

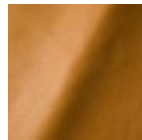
Leather is a natural product, colours may vary from hide to hide.

firetest

EN1021 1&2



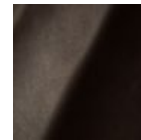
Cervino Leather
Anthracite



Cervino Leather
Cognac



Cervino Leather
Mud



Cervino Leather
Pure

Kvadrat Fabrics

Kvadrat Fabrics

Selected Moooi products can be upholstered with a collection of Kvadrat fabrics. Kvadrat designs high-quality upholstery, in an extensive range of colours and textures.

Go to our Kvadrat fabrics page for a full overview of all fabric families you can choose from.

