

m o o o i[®]



The Golden Chair

The Golden Chair, designed by Nika Zupanc for Moooi, is available in a Glossy Golden, Matt Golden and Black on Black composition. It's elegant, retro-looking base can also be dressed in a selection of fabrics to match different interiors.

Designer	Nika Zupanc
Year of design	2013
Material	Gold chromed steel frame, Gold synthetic leather

m o o o i[®]

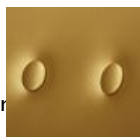
colours

Please note that there is a matt version available that has a higher martindale of 40.000, which is an advantage when using the chair in larger projects.



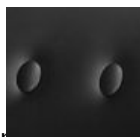
Gold

100% skai® leather
20.000 martindale
BS 5852 source
0&1



Matt gold | for
project use

100% skai® leather
>200.000
martindale
BS 5852 source
0&1



Black

100% skai® leather
>50.000
Martindale
EN1021-1/2
BS5852 part I
DIN 4102-B2
NF M2

Macchedil, Grezzo

composition

47% co, 20% vi, 18% pi, 8% li, 5% pc, 2% af

abrasion

18.000 martindale

lightfastness 4

firetest

EN1021 I&2



Macchedil, Sottile

composition

49% vi, 24% pl, 21% li, 6% co

abrasion

30.000 martindale

lightfastness 4

firetest

EN1021 I&2



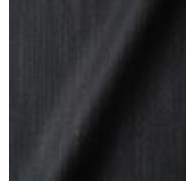
m o o o i[®]



Macchedil Sottile
Light brown



Macchedil Sottile
Grey grey



Macchedil Sottile
Anthracite



Macchedil Sottile
Blue grey



Macchedil Sottile
Cappuccino



Macchedil Sottile
Deep blue

Abbracci

composition

100% pl

abrasion

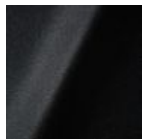
50.000 martindale

lightfastness 4

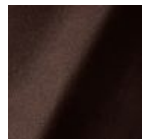
firetest

FR BS5852 0/1

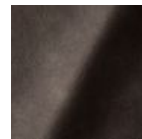
EN1021 I&2



Abbracci
Black



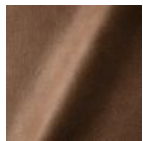
Abbracci
Brown



Abbracci
Grey



Abbracci
Oyster



Abbracci
Taupe

Oray

composition

8% co, 38% vi, 15% pl, 39% li

abrasion

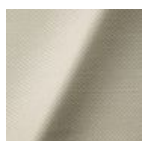
30.000 martindale

lightfastness 4

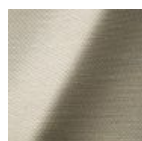
firetest

FR BS5852 0/1

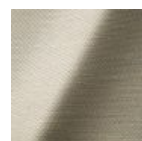
EN 1021 I&2



Oray
Cream



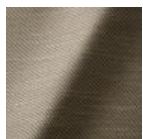
Oray
Sand



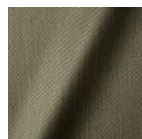
Oray
Rock



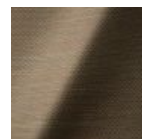
Oray
Mineral



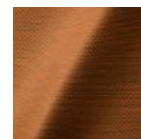
Oray
Gravel



Oray
Dark Gull



Oray
Copper

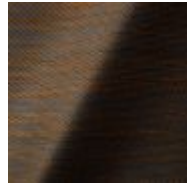


Oray
Rust

m o o o i[®]



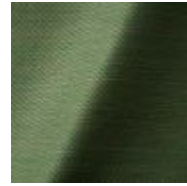
Oray
Flamboyant



Oray
Oil



Oray
Aqua



Oray
Peyote



Oray
Ocean



Oray
Metal



Oray
Griffin



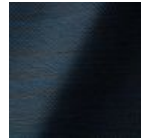
Oray
Dusk



Oray
Chestnut



Oray
Dark



Oray
Indigo



Oray
Ochre

Jacquard andaz

composition:

34% cotton - 30% viscose - 24% linen - 12% polyamide

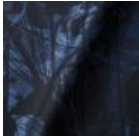
abrasion:

25000 martindale

lightfastness 4-5

firetest:

BS EN 1021 1&2



Jacquard
Andaz

Jaquard Fresco

composition

40% vi ,36% co,14% pl, 10% li

abrasion

20.000> martindale

lightfastness 4-5

firetest

EN1021 1&2



Jaquard
Fresco

Jacquard Old Black & Blue

composition

52% vi, 38% co, 10% li

abrasion

20.000> martindale

lightfastness 4-5

firetest

EN1021 I&2



Jacquard
Old Blue



Jacquard
Old Black

Justo

composition

15% CO, 35% PC, 10% PL, 40% VI

abrasion

50.000 Martindale rubs, EN ISO 12947

lightfastness

Note 5, EN ISO 105-B02

fire test

EN 1021-1/2

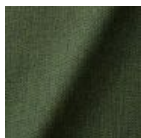
US. Cal. Bull. 117-2013

NFPA 260

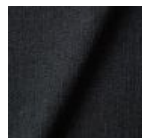
Upon request, with treatment:

BS5852 part1

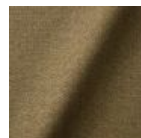
BS5852 crib5



Justo
Alge



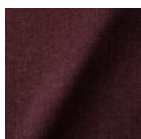
Justo
Bazalt



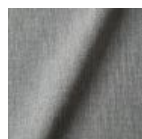
Justo
Bred



Justo
Flod



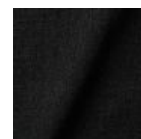
Justo
Hinde



Justo
Lyse



Justo
Muse



Justo
Nat

m o o o i[®]



Justo
Sennepe



Justo
Sten

Liscio

composition

35% WO / 35% CV / 21% CO / 9% PA

abrasion

30.000 Martindale

lightfastness

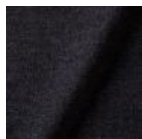
4-6

firetest

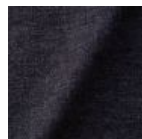
US. Cal. Bull. 117-2013

Upon request, with treatment:

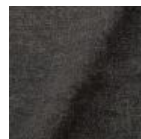
BS5852 part I



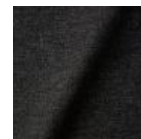
Liscio
**Grigio Blu
Scuro**



Liscio
Grigio Blu



Liscio
Grigio Scuro



Liscio
Muscio Scuro



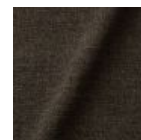
Liscio
Muscio



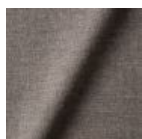
Liscio
Argento



Liscio
Nebbia



Liscio
Pietra



Liscio
Perla



Liscio
Latte Scuro



Liscio
Latte

Twill

composition

72% wo, 8% pa, 20% pl

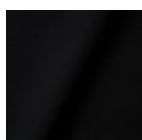
abrasion

75.000 martindale

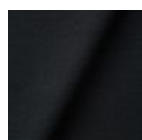
lightfastness 5

firetest

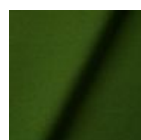
EN1021 I&2



Twill
Caviar



Twill
Graphite



Twill
Grass

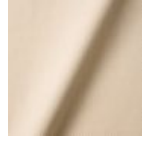


Twill
Grey

m o o o i[®]



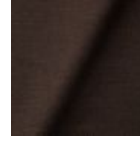
Twill
Linen



Twill
Natural



Twill
Passion



Twill
Walnut

Twill Melange

composition

60% WO / 20% PES / 20% PA

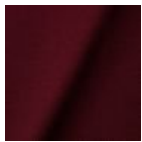
abrasion

80.000 martindale

lightfastness 6-7

firetest

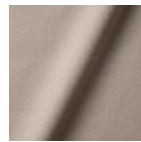
EN1021-1/2
US. Cal. Bull. 117-2013
BS5852 part I
DIN 4102-B2



Twill Melange
Chili



Twill Melange
Dust



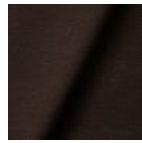
Twill Melange
Flour



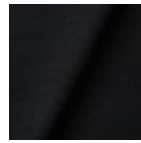
Twill Melange
Lagoon



Twill Melange
Lavender



Twill Melange
Peat



Twill Melange
Slate



Twill Melange
Twig

Trickle

composition

60% WO / 20% PES / 20% PA

abrasion

80.000 martindale

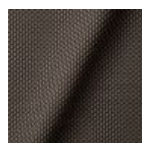
lightfastness 6

firetest

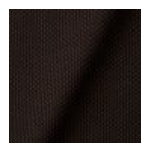
EN1021-1/2
US. Cal. Bull. 117-2013
BS5852 part I
DIN 4102-B2



Trickle
Flour



Trickle
Twig



Trickle
Peat

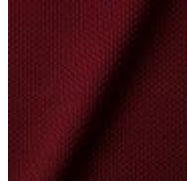


Trickle
Dust

m o o o i[®]



Trickle
Slate



Trickle
Chili



Trickle
Lavender



Trickle
Lagoon

Velour

composition

77% wo, 8% pa, 15% pl

abrasion

100.000 martindale

lightfastness 7

firetest

FR BS5852 0/1

EN1021 I&2



Velour
Coral



Velour
Stone



Velour
Moss

Kvadrat Fabrics

Kvadrat Fabrics

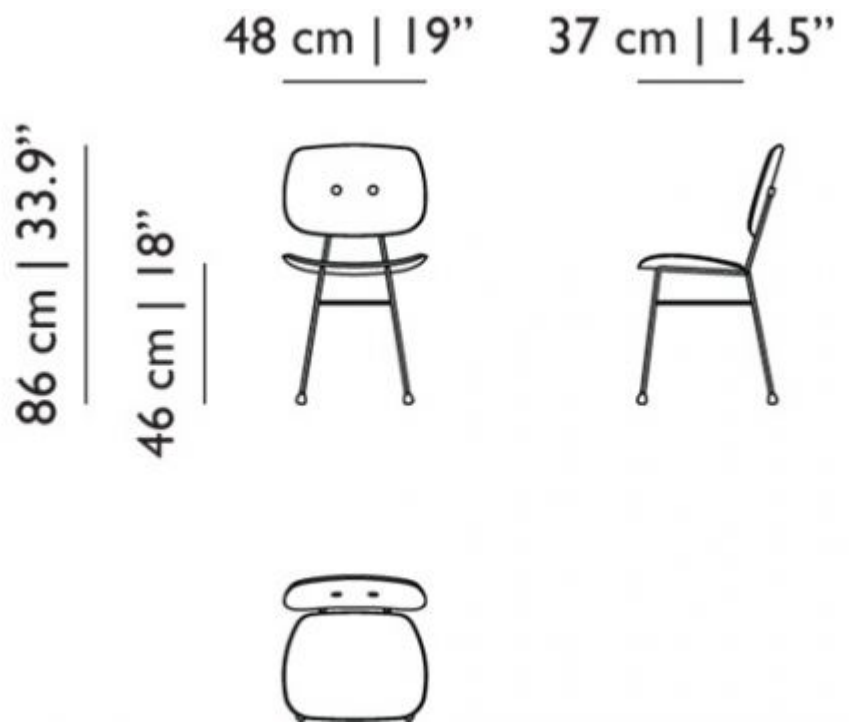
Selected Moooi products can be upholstered with a collection of Kvadrat fabrics. Kvadrat designs high-quality upholstery, in an extensive range of colours and textures.

Go to our [Kvadrat fabrics page](#) for a full overview of all fabric families you can choose from.



dimensions

m o o o i[®]



cleaning instructions

Moooi recommends using a good furniture polish and a soft cloth. Apply generously in layers to the surface and use the cloth to shine. Do not use abrasive fabrics, gently remove tough stains with warm water and a trusted multi-surface cleaner.

packaging

H 51 cm | 20,1"

W 49 cm | 19,3"

D 90 cm | 35,4"

Colli 1/1

Product weight:

9 KG | 19,8 lb

With packaging:

10,5 KG | 23,1 lb