

m o o o i<sup>®</sup>



## Zio Dining Chair

---

by Marcel Wanders

Dining at home acquires a whole new meaning with the classic elegance and contemporary comfort of the Zio dining chair by Marcel Wanders. Sitting in its solid, sculptured wooden structure and soft cushioned body makes you feel immediately at ease, ready for an exquisite meal and a sharp conversation!

---

<b>Designer</b>	Marcel Wanders
<b>Year of design</b>	2013
<b>Material</b>	Solid oak frame

---

---

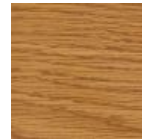
## Stain colours



White Wash



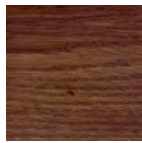
Wenge



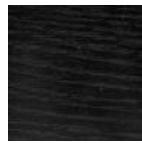
Natural Oil



Grey



Cinnamon



Black Stained

Zio lounge chair, dining chair, dining table and coffee tables are also available in a composition of Cinnamon and White Washed stained oak.



Composition



Composition



Composition

---

## cleaning instructions

Moooi recommends using a good furniture polish and a soft cloth. Apply generously in layers to the surface and use the cloth to shine. Do not use abrasive fabrics, gently remove tough stains with warm water and a trusted multi-surface cleaner.

---

## packaging

### Zio Dining Chair

H 83 cm | 32,7"

W 62 cm | 24,4"

D 63 cm | 24,8"

Colli 1/1

With packaging:

12 KG | 26,5 lb

---

## dimensions

# m o o o i<sup>®</sup>



## Macchedil, Grezzo

### composition

47% co, 20% vi, 18% pi, 8% li, 5% pc, 2% af

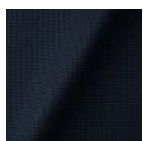
### abrasion

18.000 martindale

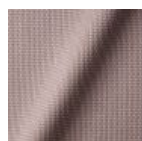
### lightfastness 4

### firetest

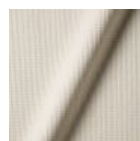
EN1021 I&2



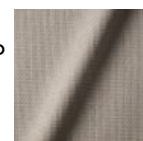
Macchedil Grezzo  
**Black indigo**



Macchedil Grezzo  
**Pinkish**



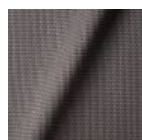
Macchedil Grezzo  
**Off white**



Macchedil Grezzo  
**Light grey**



Macchedil Grezzo  
**Light brown**



Macchedil Grezzo  
**Grey grey**



Macchedil Grezzo  
**Anthracite**



Macchedil Grezzo  
**Blue grey**



Macchedil Grezzo  
**Cappuccino**



Macchedil Grezzo  
**Deepblue**

## Macchedil, Sottile

### composition

49% vi, 24% pl, 21% li, 6% co

### abrasion

30.000 martindale

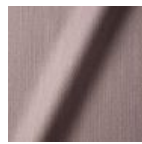
### lightfastness 4

### firetest

EN1021 I&2



Macchedil Sottile  
**Black indigo**



Macchedil Sottile  
**Pinkish**



Macchedil Sottile  
**Off white**



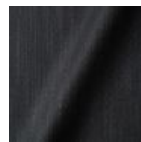
Macchedil Sottile  
**Light grey**



Macchedil Sottile  
**Light brown**



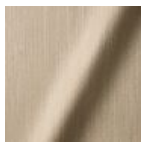
Macchedil Sottile  
**Grey grey**



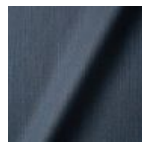
Macchedil Sottile  
**Anthracite**



Macchedil Sottile  
**Blue grey**



Macchedil Sottile  
**Cappuccino**



Macchedil Sottile  
**Deep blue**

## Abbracci

### composition

100% pl

### abrasion

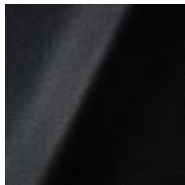
50.000 martindale

### lightfastness 4

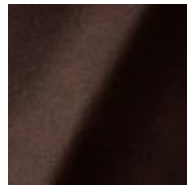
### firetest

FR BS5852 0/1  
EN1021 I&2

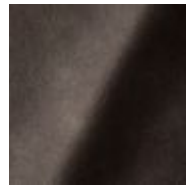
# m o o o i<sup>®</sup>



Abbracci  
**Black**



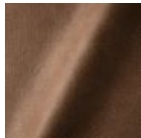
Abbracci  
**Brown**



Abbracci  
**Grey**



Abbracci  
**Oyster**



Abbracci  
**Taupe**

---

## Manga

### composition

29% pl, 71% co

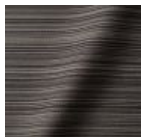
### abrasion

40.000 martindale

### lightfastness 5

### firetest

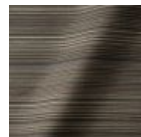
FR BS5852 0/1  
EN1021 I&2



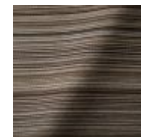
Manga  
**Grey**



Manga  
**Blue**



Manga  
**Green**



Manga  
**Brown**

---

## Oray

### composition

8% co, 38% vi, 15% pl, 39% li

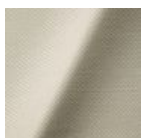
### abrasion

30.000 martindale

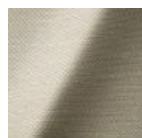
### lightfastness 4

### firetest

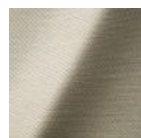
FR BS5852 0/1  
EN 1021 I&2



Oray  
**Cream**



Oray  
**Sand**



Oray  
**Rock**



Oray  
**Mineral**

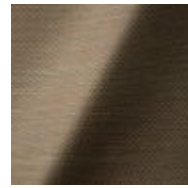
# m o o o i<sup>®</sup>



Oray  
**Gravel**



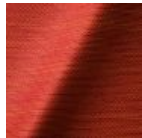
Oray  
**Dark Gull**



Oray  
**Copper**



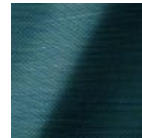
Oray  
**Rust**



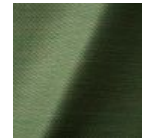
Oray  
**Flamboyant**



Oray  
**Oil**



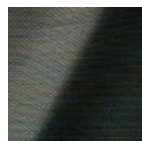
Oray  
**Aqua**



Oray  
**Peyote**



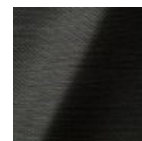
Oray  
**Ocean**



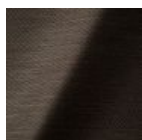
Oray  
**Metal**



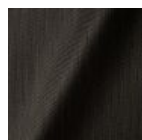
Oray  
**Griffin**



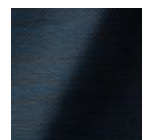
Oray  
**Dusk**



Oray  
**Chestnut**



Oray  
**Dark**



Oray  
**Indigo**



Oray  
**Ochre**

---

## Solis

### composition

2% PA 3% PC 30% PL 65% WO

### abrasion

40.000 Martindale rubs, EN ISO 12947

### lightfastness

Note 5, EN ISO 105-B02

### firetest

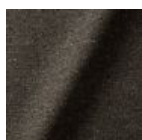
EN 1021-1/2

US. Cal. Bull. 117-2013

Upon request, with treatment:

BS5852 part 1

BS5852 crib5



Solis  
**Crust**



Solis  
**Dawn**



Solis  
**Fog**



Solis  
**Gray**



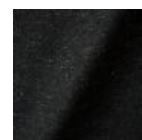
Solis  
**Paper**



Solis  
**Rain**



Solis  
**Spencer**



Solis  
**Suit**



Solis  
**Sunset**

---

## Jacquard andaz

**composition:**

34% cotton - 30% viscose - 24% linen - 12% polyamide

**abrasion:**

25000 martindale

**lightfastness** 4-5

**firetest:**

BS EN 1021 1&2



Jacquard  
**Andaz**

---

## Jaquard Fresco

**composition**

40% vi ,36% co,14% pl, 10% li

**abrasion**

20.000> martindale

**lightfastness** 4-5

**firetest**

EN1021 1&2



Jaquard  
**Fresco**

---

## Jacquard Old Black & Blue

# m o o o i<sup>®</sup>

## composition

52% vi, 38% co, 10% li

## abrasion

20.000> martindale

## lightfastness 4-5

## firetest

EN1021 I&2



Jacquard  
**Old Blue**



Jacquard  
**Old Black**

---

## Justo

## composition

15% CO, 35% PC, 10% PL, 40% VI

## abrasion

50.000 Martindale rubs, EN ISO 12947

## lightfastness

Note 5, EN ISO 105-B02

## fire test

EN 1021-1/2

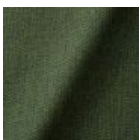
US. Cal. Bull. 117-2013

NFPA 260

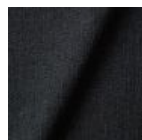
Upon request, with treatment:

BS5852 part1

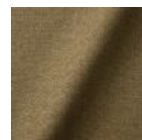
BS5852 crib5



Justo  
**Alge**



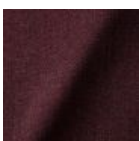
Justo  
**Bazalt**



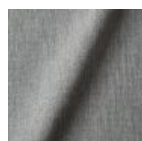
Justo  
**Bred**



Justo  
**Flod**



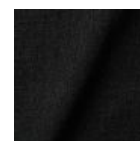
Justo  
**Hinde**



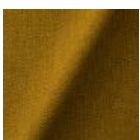
Justo  
**Lyse**



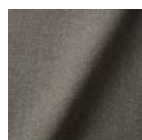
Justo  
**Muse**



Justo  
**Nat**



Justo  
**Sennep**



Justo  
**Sten**



## Liscio

### composition

35% WO / 35% CV / 21% CO / 9% PA

### abrasion

30.000 Martindale

### lightfastness

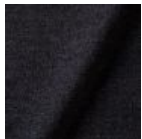
4-6

### firetest

US. Cal. Bull. 117-2013

Upon request, with treatment:

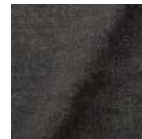
BS5852 part I



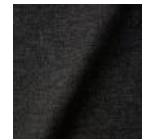
Liscio  
**Grigio Blu  
Scuro**



Liscio  
**Grigio Blu**



Liscio  
**Grigio Scuro**



Liscio  
**Muscio Scuro**



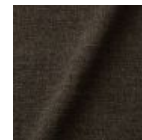
Liscio  
**Muscio**



Liscio  
**Argento**



**Liscio**  
Nebbia



Liscio  
**Pietra**



Liscio  
**Perla**



Liscio  
**Latte Scuro**



Liscio  
**Latte**

## Trickle

### composition

60% WO / 20% PES / 20% PA

### abrasion

80.000 martindale

### lightfastness 6

### firetest

EN1021-1/2

US. Cal. Bull. 117-2013

BS5852 part I

DIN 4102-B2



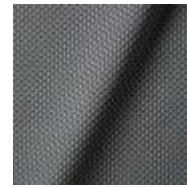
Trickle  
**Flour**



Trickle  
**Twig**



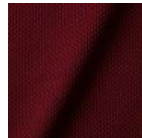
Trickle  
**Peat**



Trickle  
**Dust**



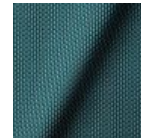
**Trickle**  
Slate



Trickle  
**Chili**



Trickle  
**Lavender**



Trickle  
**Lagoon**

## Twill

### composition

72% wo, 8% pa, 20% pl

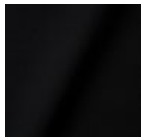
### abrasion

75.000 martindale

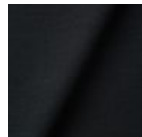
### lightfastness 5

### firetest

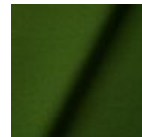
EN1021 I&2



Twill  
**Caviar**



Twill  
**Graphite**



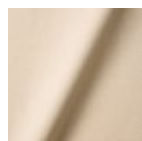
Twill  
**Grass**



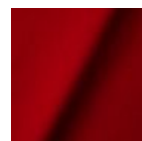
Twill  
**Grey**



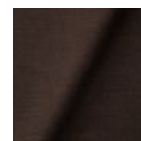
Twill  
**Linen**



Twill  
**Natural**



Twill  
**Passion**



Twill  
**Walnut**

## Twill Melange

# m o o o i<sup>®</sup>

## composition

60% WO / 20% PES / 20% PA

## abrasion

80.000 martindale

## lightfastness 6-7

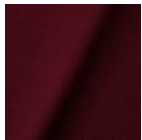
## firetest

EN1021-1/2

US. Cal. Bull. 117-2013

BS5852 part1

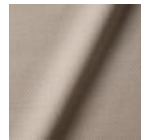
DIN 4102-B2



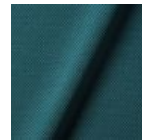
Twill Melange  
**Chili**



Twill Melange  
**Dust**



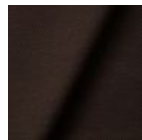
Twill Melange  
**Flour**



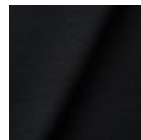
Twill Melange  
**Lagoon**



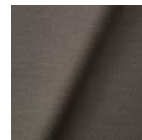
Twill Melange  
**Lavender**



Twill Melange  
**Peat**



Twill Melange  
**Slate**



Twill Melange  
**Twig**

---

## Velour

## composition

77% wo, 8% pa, 15% pl

## abrasion

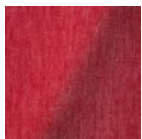
100.000 martindale

## lightfastness 7

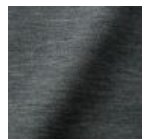
## firetest

FR BS5852 0/1

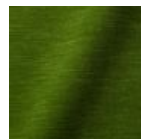
EN1021 1&2



Velour  
**Coral**



Velour  
**Stone**



Velour  
**Moss**

---

## Vesper



**composition**

10% CO, 40% L, 10% PA, 10% PL, 30% VI

**abrasion**

40.000 Martindale rubs, EN ISO 12947

**lightfastness**

Note 5, EN ISO 105-B02

**firetest**

EN 1021-1/2

US. Cal. Bull. 117-2013

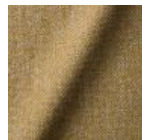
Upon request, with treatment:

BS5852 part I

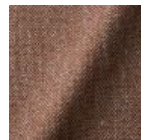
BS5852 crib5



Vesper  
**Aluminium**



Vesper  
**Brass**



Vesper  
**Bronze**



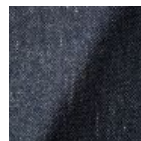
Vesper  
**Carbon**



Vesper  
**Nickel**



Vesper  
**Silver**



Vesper  
**Steel**



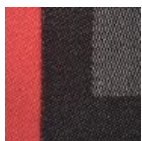
Vesper  
**Titan**

---

## Tartanic

**composition**

64% VI / 27% CO / 9% PA



---

## Extinct Animal Collection - Dodo Pavone



**composition**

12% CO 88% PL

**abrasion**

40.000 Martindale rubs, EN ISO 12947

**lightfastness**

Note 5, EN ISO 105-B02

**firetest**

US. Cal. Bull. 117-2013

Upon request, with treatment:

BS5852 part 1



---

## Arredo Leather

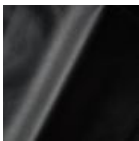
**composition**

100% semi aniline leather

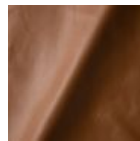
Leather is a natural product, colours may vary from hide to hide.

**firetest**

EN1021 I&2



Arredo Leather  
**Black**



Arredo Leather  
**Brown**



Arredo Leather  
**White**

---

## Cervino Leather

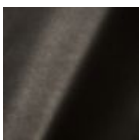
**composition**

100% aniline leather

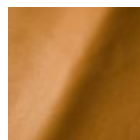
Leather is a natural product, colours may vary from hide to hide.

**firetest**

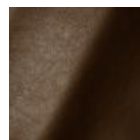
EN1021 I&2



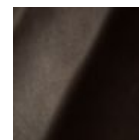
Cervino Leather  
**Anthracite**



Cervino Leather  
**Cognac**



Cervino Leather  
**Mud**



Cervino Leather  
**Pure**



## **Kvadrat Fabrics**

### **Kvadrat Fabrics**

Selected Moooi products can be upholstered with a collection of Kvadrat fabrics. Kvadrat designs high-quality upholstery, in an extensive range of colours and textures.

Go to our Kvadrat fabrics page for a full overview of all fabric families you can choose from.

