

m o o o i[®]



Bart Canapé & Canapé Armchair

by Moooi Works | Bart Schilder

Have you ever thought of bringing a touch of grandeur to your home, without conveying the firm austerity of real antiques?

Designer	Moooi Works
Year of design	2012
Material	Wooden frame covered in foam and dacron, the seat cushion is made in foam.

detailing

Bart sofa is produced with removable covers for the seat cushion and all pillows (please check per category).

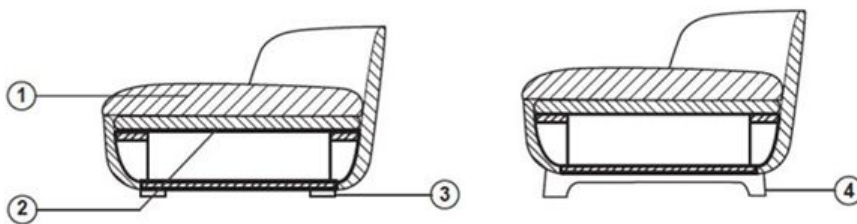
There are 3 compositions available; SOFA (low seat), CANAPE (active seat) and DAYBED.

The Daybed comes with a set of pillows in matching upholstery.

technical

The Bart sofa is constructed from a wood frame covered in foam and dacron, the seat cushion is made in foam and removable.

Bart sofa is produced with removable covers for the seat cushion and all pillows (please check per category).



1. Multiple density fire retardant foam composition + dacron on wood frame
2. Elastic straps fixed on the wood base
3. Plastic glider feet
4. Solid wood legs (for Canape)

Abbracci

composition

100% pl

abrasion

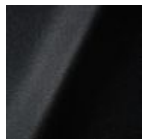
50.000 martindale

lightfastness 4

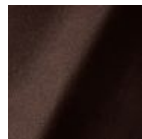
firetest

FR BS5852 0/1

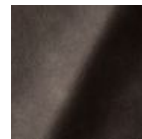
EN1021 I&2



Abbracci
Black



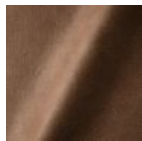
Abbracci
Brown



Abbracci
Grey



Abbracci
Oyster



Abbracci
Taupe

Divina 3

Composition

100% new wool

Martindale

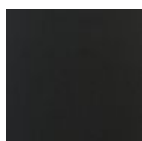
45.000

Pilling

3

Lightfastness

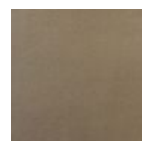
7



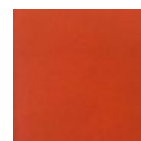
Divina 3
Black



Divina 3
Blue



Divina 3
Brown



Divina 3
Orange

Divina Melange 2

Composition

100% New wool

Durability

45.000 Martindale

Pilling

3

Lightfastness

6-7

Sustainability

Natural fibres / Sustainable resource

	Divina Melange 120		Divina Melange 170		Divina Melange 180		Divina Melange 220
	Divina Melange 260		Divina Melange 280		Divina Melange 421		Divina Melange 471
	Divina Melange 521		Divina Melange 531		Divina Melange 571		Divina Melange 581
	Divina Melange 620		Divina Melange 631		Divina Melange 671		Divina Melange 681
	Divina Melange 721		Divina Melange 731		Divina Melange 771		Divina Melange 821
	Divina Melange 871		Divina Melange 920		Divina Melange 931		Divina Melange 971

Justo

composition

15% CO, 35% PC, 10% PL, 40% VI

abrasion

50.000 Martindale rubs, EN ISO 12947

lightfastness

Note 5, EN ISO 105-B02

fire test

EN 1021-1/2

US. Cal. Bull. 117-2013

NFPA 260

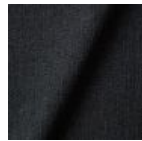
Upon request, with treatment:

BS5852 part I

BS5852 crib5



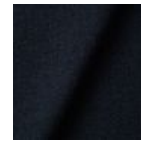
Justo
Alge



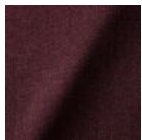
Justo
Bazalt



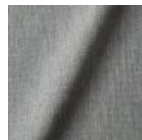
Justo
Bred



Justo
Flod



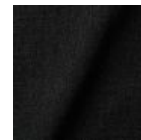
Justo
Hinde



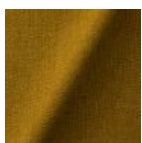
Justo
Lyse



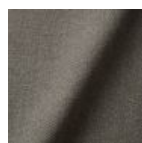
Justo
Muse



Justo
Nat



Justo
Sennep



Justo
Sten

Twill Summit Uni Composition

composition

Twill: 72% wo, 8% pa, 20% pl

Summit UNI: 22% wo, 2% pa, 14% pl, 62% pl filling

abrasion

Twill: 75.000 martindale

Summit Uni: 50.000 martindale

lightfastness 5

firetest

EN1021 I&2

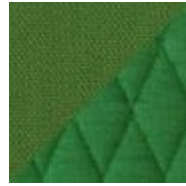
m o o o i[®]



Caviar



Graphite



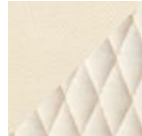
Grass



Grey



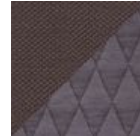
Linen



Natural



Passion



Walnut

Solis

composition

2% PA 3% PC 30% PL 65% WO

abrasion

40.000 Martindale rubs, EN ISO 12947

lightfastness

Note 5, EN ISO 105-B02

firetest

EN 1021-1/2

US. Cal. Bull. 117-2013

Upon request, with treatment:

BS5852 part I

BS5852 crib5



Solis
Crust



Solis
Dawn



Solis
Fog



Solis
Gray



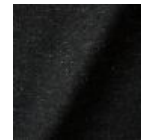
Solis
Paper



Solis
Rain



Solis
Spencer



Solis
Suit



Solis
Sunset

Macchedil Composition

composition

grezzo: co, 20% vi, 18% pi, 8% li, 5% pc, 2% af

sottile: 49% vi, 24% pl, 21% li, 6% co

abrasion

grezzo: 18.000 martindale

sottile: 30.000 martindale

lightfastness 4

firetest

EN1021 1&2



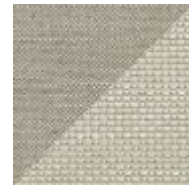
Black indigo



Pinkish



Off white



Light grey



Light brown



Grey grey



Anthracite



Blue grey



Cappucino



Deep blue

Liscio

composition

35% WO / 35% CV / 21% CO / 9% PA

abrasion

30.000 Martindale

lightfastness

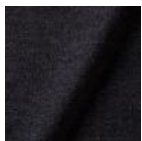
4-6

firetest

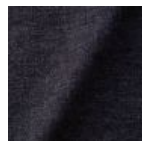
US. Cal. Bull. 117-2013

Upon request, with treatment:

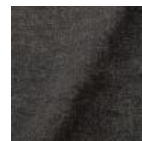
BS5852 part I



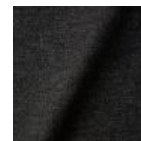
Liscio
**Grigio Blu
Scuro**



Liscio
Grigio Blu



Liscio
Grigio Scuro



Liscio
Muscio Scuro



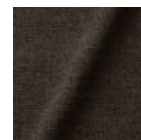
Liscio
Muscio



Liscio
Argento



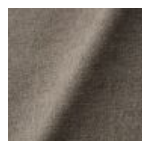
Liscio
Nebbia



Liscio
Pietra



Liscio
Perla



Liscio
Latte Scuro



Liscio
Latte

Summit UNI

composition

22% wo, 2% pa, 14% pl, 62% pl filling

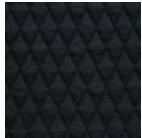
abrasion

50.000 martindale

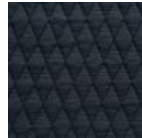
lightfastness 5

firetest

EN1021 I&2



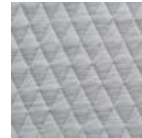
Summit UNI
Caviar



Summit UNI
Graphite



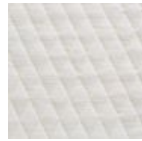
Summit UNI
Grass



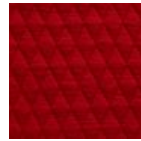
Summit UNI
Grey



Summit UNI
Linen



Summit UNI
Natural



Summit UNI
Passion



Summit UNI
Walnut

Summit Melange

composition

20% WO / 5% PA / 15% PES

60% PES filling

abrasion

50.000 martindale

lightfastness 6

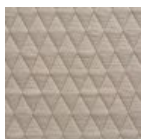
firetest

EN1021-I/2

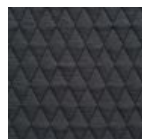
US. Cal. Bull. 117-2013

BS5852 part I

DIN 4102-B2



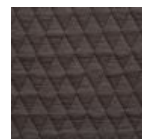
Summit Melange
Flour



Summit Melange
Slate



Summit Melange
Dust



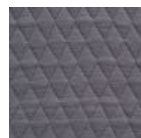
Summit Melange
Peat



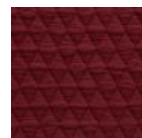
Summit Melange
Twig



Summit Melange
Lagoon



Summit Melange
Lavender



Summit Melange
Chili

m o o o i[®]

Trickle

composition

60% WO / 20% PES / 20% PA

abrasion

80.000 martindale

lightfastness 6

firetest

EN1021-1/2

US. Cal. Bull. 117-2013

BS5852 part1

DIN 4102-B2



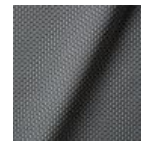
Trickle
Flour



Trickle
Twig



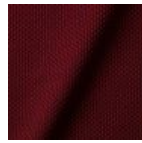
Trickle
Peat



Trickle
Dust



Trickle
Slate



Trickle
Chili



Trickle
Lavender



Trickle
Lagoon

Twill

composition

72% wo, 8% pa, 20% pl

abrasion

75.000 martindale

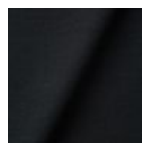
lightfastness 5

firetest

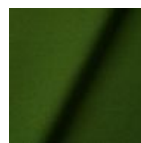
EN1021 I&2



Twill
Caviar



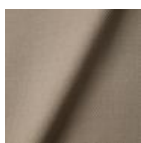
Twill
Graphite



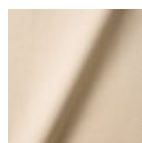
Twill
Grass



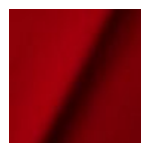
Twill
Grey



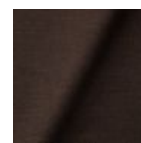
Twill
Linen



Twill
Natural



Twill
Passion



Twill
Walnut

Twill Melange

composition

60% WO / 20% PES / 20% PA

abrasion

80.000 martindale

lightfastness 6-7

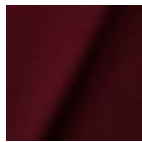
firetest

EN1021-1/2

US. Cal. Bull. 117-2013

BS5852 part1

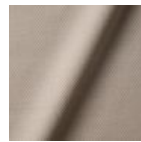
DIN 4102-B2



Twill Melange
Chili



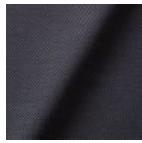
Twill Melange
Dust



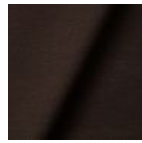
Twill Melange
Flour



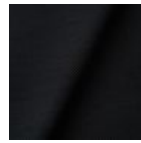
Twill Melange
Lagoon



Twill Melange
Lavender



Twill Melange
Peat



Twill Melange
Slate



Twill Melange
Twig

Velour

composition

77% wo, 8% pa, 15% pl

abrasion

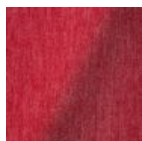
100.000 martindale

lightfastness 7

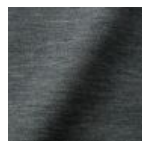
firetest

FR BS5852 0/1

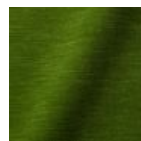
EN1021 I&2



Velour
Coral



Velour
Stone



Velour
Moss

Vesper

composition

10% CO, 40% L, 10% PA, 10% PL, 30% VI

abrasion

40.000 Martindale rubs, EN ISO 12947

lightfastness

Note 5, EN ISO 105-B02

firetest

EN 1021-1/2

US. Cal. Bull. 117-2013

Upon request, with treatment:

BS5852 part 1

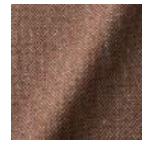
BS5852 crib 5



Vesper
Aluminium



Vesper
Brass



Vesper
Bronze



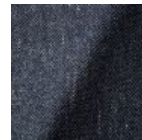
Vesper
Carbon



Vesper
Nickel



Vesper
Silver



Vesper
Steel



Vesper
Titan

Arredo Leather

composition

100% semi aniline leather

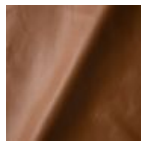
Leather is a natural product, colours may vary from hide to hide.

firetest

EN1021 I&2



Arredo Leather
Black



Arredo Leather
Brown



Arredo Leather
White

Cervino Leather

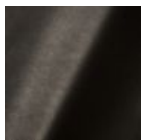
composition

100% aniline leather

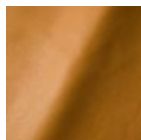
Leather is a natural product, colours may vary from hide to hide.

firetest

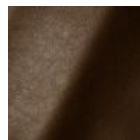
EN1021 I&2



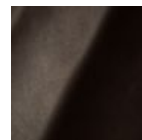
Cervino Leather
Anthracite



Cervino Leather
Cognac



Cervino Leather
Mud



Cervino Leather
Pure

Extinct Animal Collection - Dodo Pavone

composition

12% CO 88% PL

abrasion

40.000 Martindale rubs, EN ISO 12947

lightfastness

Note 5, EN ISO 105-B02

firetest

US. Cal. Bull. 117-2013

Upon request, with treatment:

BS5852 part I

m o o o i[®]



Kvadrat Fabrics

Kvadrat Fabrics

Selected Moooi products can be upholstered with a collection of Kvadrat fabrics. Kvadrat designs high-quality upholstery, in an extensive range of colours and textures.

Go to our Kvadrat fabrics page for a full overview of all fabric families you can choose from.



packaging

Bart Sofa, Daybed & Canape:

H 105 cm | 41.3"
W 250 cm | 98.4"
D 72 cm | 28.3"

Colli I

With packaging:
89 KG | 196 lb

Bart Sofa XL:

H 116 cm | 45.7"
W 306 cm | 120.5"
D 66 cm | 26.0"

Colli I

With packaging:
110 KG | 243 lb

Bart Armchair, Bart Canape
Armchair:

H 102 cm | 40.2"
W 104 cm | 40.9"
D 63 cm | 24.8"

Colli I

KG | lb
With packaging:
39 KG | 86 lb

dimensions

m o o o i[®]

