

m o o o i<sup>®</sup>



## Cloud Sofa

---

Have you ever wished that you could fall into the softness of a white cloud that looks like cotton candy?

---

<b>Designer</b>	Marcel Wanders
<b>Year of design</b>	2012
<b>Material</b>	Steel frame, moulded foam and dacron upholstered, steel connections.

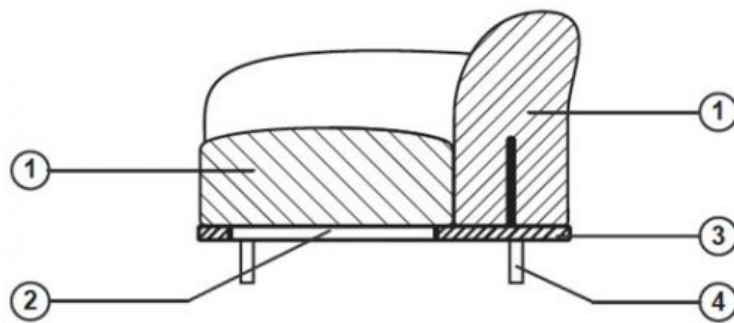
---

---

## technical

The cloud sofa is constructed in wood and foam, where the foam parts are connected to the wood base by steel connections. The foam of the side, seat and back is covered with dacron.

The finish of the upholstery buttons depend on the choice of fabric and colour.



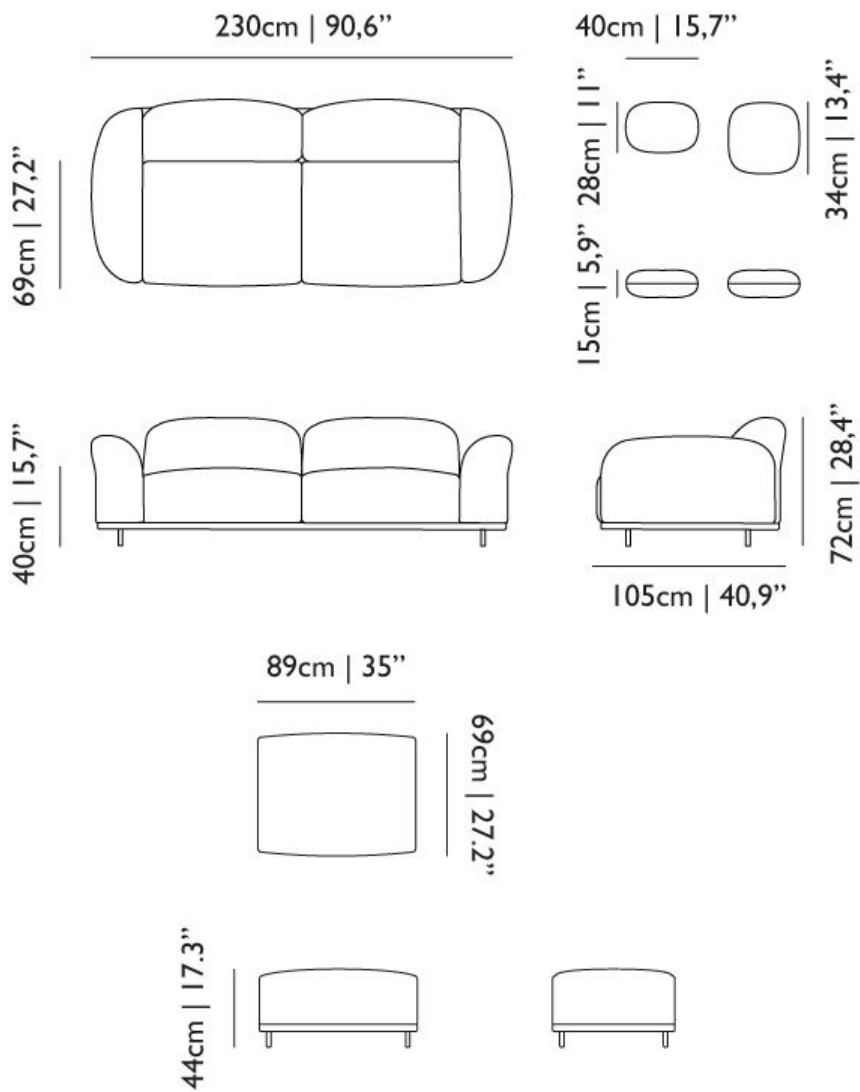
1. Fire retardant moulded foam and dacron
2. Elastic straps fixed in steel frame
3. Steel frame, covered with dacron and upholstered
4. Chromed steel legs (a 5th central leg is included)

## upholstery categories

Bouclé  
Twill

Summit Uni  
Velour

## dimensions



## Bouclé

**composition**

43% co, 28% pan, 14% pa, 12% vi, 3% pl

**abrasion**

20.000> martindale

**lightfastness 4**

**firetest**

EN1021 I&2



Bouclé  
**Black white**



Bouclé  
**Rainbow**



Bouclé  
**Brown**



Bouclé  
**Blue**

## Liscio

**composition**

35% WO / 35% CV / 21% CO / 9% PA

**abrasion**

30.000 Martindale

**lightfastness**

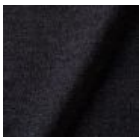
4-6

**firetest**

US. Cal. Bull. 117-2013

Upon request, with treatment:

BS5852 part I



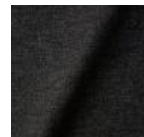
Liscio  
**Grigio Blu Scuro**



Liscio  
**Grigio Blu**



Liscio  
**Grigio Scuro**



Liscio  
**Muscio Scuro**



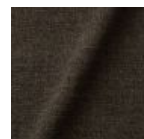
Liscio  
**Muscio**



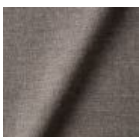
Liscio  
**Argento**



**Liscio**  
Nebbia



Liscio  
**Pietra**



Liscio  
**Perla**



Liscio  
**Latte Scuro**



Liscio  
**Latte**

m o o o i<sup>®</sup>

## Summit Melange

**composition**

20% WO / 5% PA / 15% PES  
60% PES filling

**abrasion**

50.000 martindale

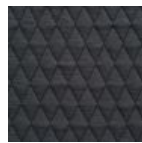
**lightfastness 6**

**firetest**

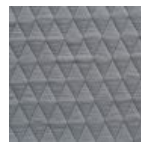
EN1021-1/2  
US. Cal. Bull. 117-2013  
BS5852 part1  
DIN 4102-B2



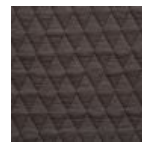
Summit Melange  
**Flour**



Summit Melange  
**Slate**



Summit Melange  
**Dust**



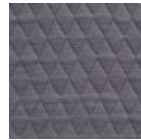
Summit Melange  
**Peat**



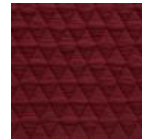
Summit Melange  
**Twig**



Summit Melange  
**Lagoon**



Summit Melange  
**Lavender**



Summit Melange  
**Chili**

## Summit UNI

**composition**

22% wo, 2% pa, 14% pl, 62% pl filling

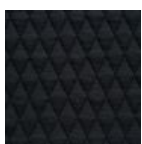
**abrasion**

50.000 martindale

**lightfastness 5**

**firetest**

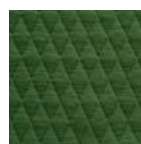
EN1021 1&2



Summit UNI  
**Caviar**



Summit UNI  
**Graphite**



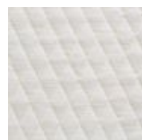
Summit UNI  
**Grass**



Summit UNI  
**Grey**



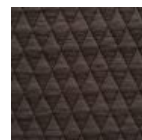
Summit UNI  
**Linen**



Summit UNI  
**Natural**



Summit UNI  
**Passion**



Summit UNI  
**Walnut**

m o o o i<sup>®</sup>

## Trickle

**composition**

60% WO / 20% PES / 20% PA

**abrasion**

80.000 martindale

**lightfastness 6**

**firetest**

EN1021-1/2

US. Cal. Bull. 117-2013

BS5852 part1

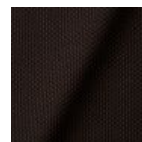
DIN 4102-B2



Trickle  
**Flour**



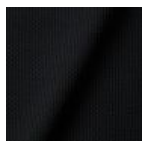
Trickle  
**Twig**



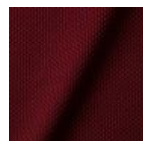
Trickle  
**Peat**



Trickle  
**Dust**



**Trickle**  
Slate



Trickle  
**Chili**



Trickle  
**Lavender**



Trickle  
**Lagoon**

## Twill

**composition**

72% wo, 8% pa, 20% pl

**abrasion**

75.000 martindale

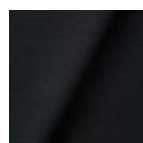
**lightfastness 5**

**firetest**

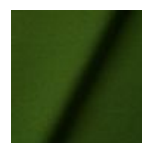
EN1021 I&2



Twill  
**Caviar**



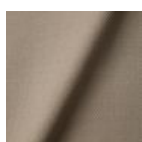
Twill  
**Graphite**



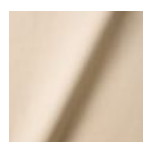
Twill  
**Grass**



Twill  
**Grey**



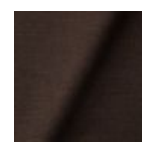
Twill  
**Linen**



Twill  
**Natural**



Twill  
**Passion**



Twill  
**Walnut**



## Twill Melange

**composition**

60% WO / 20% PES / 20% PA

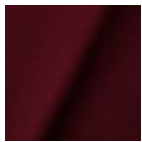
**abrasion**

80.000 martindale

**lightfastness** 6-7

**firetest**

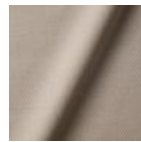
EN1021-1/2  
US. Cal. Bull. 117-2013  
BS5852 part1  
DIN 4102-B2



Twill Melange  
**Chili**



Twill Melange  
**Dust**



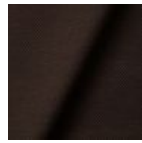
Twill Melange  
**Flour**



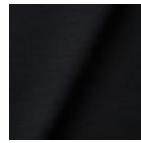
Twill Melange  
**Lagoon**



Twill Melange  
**Lavender**



Twill Melange  
**Peat**



Twill Melange  
**Slate**



Twill Melange  
**Twig**

## Velour

**composition**

77% wo, 8% pa, 15% pl

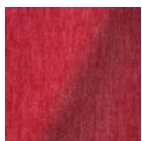
**abrasion**

100.000 martindale

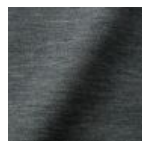
**lightfastness** 7

**firetest**

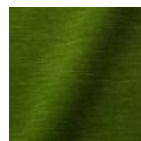
FR BS5852 0/1  
EN1021 I&2



Velour  
**Coral**



Velour  
**Stone**



Velour  
**Moss**

## Extinct Animal Collection - Dodo Pavone

# m o o o i<sup>®</sup>

**composition**

12% CO 88% PL

**abrasion**

40.000 Martindale rubs, EN ISO 12947

**lightfastness**

Note 5, EN ISO 105-B02

**firetest**

US. Cal. Bull. 117-2013

Upon request, with treatment:

BS5852 part 1

