

MOEL 2

Design by
Inga Sempé

Description

In 2017, Moël celebrates its 10th birthday by complementing itself with Moël 2, which adopts a new covering material for the corolla of its back : a 5 mm thick wool felt, available in a choice of 5 colours : anthracite, blanc mélangé, gris, terra cotta and moss. In addition, the seat and the interior of the backrest of Moël 2 are now available in 2 versions:

- the usual Moël bands of regular vertical quilting, or
- a special new style of quilting in tighter bands of quilting with interrupted stitching, creating a dynamic rhythmic effect.

Moël 2 speaks directly to all those who live in a natural, casual style and whose wish is to create a warm, intimate living space in which to receive friends. Its very high degree of comfort is affirmed by its softly rounded lines which combine to create a convivial space - and which almost make one forget that it bears no resemblance to any other seat.

Technical Specifications

CONSTRUCTION

Shells in thermoformed ABS (a combination of resin + elastomer which results in a highly resistant form of plastic) clad in polyether foam 34 kg/m3 - 5.7 kPa. Decorative rear feet covered to match rest of seat.

COMFORT

Integral seat cushion in high resilience polyurethane Bultex foam 32 kg/m3 - 2.8 kPa clad in a comfort layer of Bultex foam 26 kg/m3 - 1.4 kPa. Seat cover quilted with Bultex 26 kg/m3 - 1.4 kPa. Integral back cushion with headrest, lumbar cushion and armrests in Bultex 26 kg/m3 - 1.4 kPa clad in 200 g/m² polyester quilting. Footstool in Bultex 48 kg/m3 - 5.3 kPa.

MAKING-UP

Covers of back and seat are quilted with 300 g/m² polyester on their interior faces, creating a structured visual effect of quilted bands. Covers of footstool are quilted with 200 g/m² polyester. The rear of each item is held within a corolla-shaped piece which is zipped into place (metal-fronted zip). This corolla may be covered in 5 mm thick wool felt.

COVERING MATERIALS

The covers of the inside faces are ordered separately from those of the external corolla, thus making it possible to create a bi-material and/or bicolour interpretation.

The footstool is also a bicolour piece : Inga Sempé advises using the same covering material for the top surface as that used for the corolla of the armchairs/settees, and the same covering material for the main part of the footstool as that used for the inside faces of the armchairs or settees.

More info at
www.ligne-roset.com

© Ligne Roset 2018

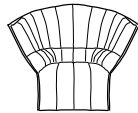


ARMCHAIR - ORIGINAL QUILTING LOW BACK EXTERIOR OF BACK IN FELT

DIMENSIONS

H 810 mm - W 1050 mm - D 890 mm - SH 410 mm -

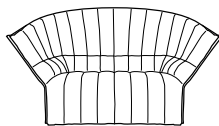
Other sizes



armchair - original quilting low back
exterior of back in felt

DIMENSIONS

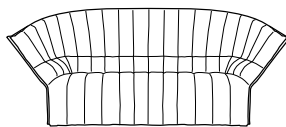
H 810 - mm
W 1050 - mm
D 890 - mm
SH 410 - mm



small settee - original quilting low back
exterior of back in felt

DIMENSIONS

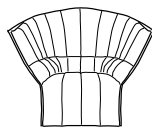
H 810 - mm
W 1550 - mm
D 890 - mm
SH 410 - mm



large settee - original quilting low back
exterior of back in felt

DIMENSIONS

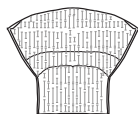
H 810 - mm
W 2050 - mm
D 890 - mm
SH 410 - mm



armchair - original quilting high back
exterior of back in felt

DIMENSIONS

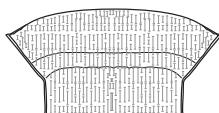
H 970 - mm
W 1150 - mm
D 980 - mm
SH 410 - mm



armchair - new quilting low back
exterior of back in felt

DIMENSIONS

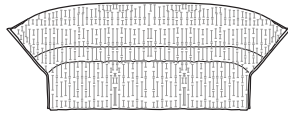
H 810 - mm
W 1050 - mm
D 890 - mm
SH 410 - mm



small settee - new quilting low back
exterior of back in felt

DIMENSIONS

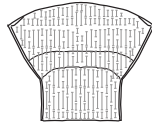
H 810 - mm
W 1550 - mm
D 890 - mm
SH 410 - mm



large settee - new quilting low back
exterior of back in felt

DIMENSIONS

H 810 - mm
W 2050 - mm
D 890 - mm
SH 410 - mm



armchair - new quilting high back
exterior of back in felt

DIMENSIONS

H 970 - mm
W 1150 - mm
D 980 - mm
SH 410 - mm



small footstool - original quilting sides
in felt

DIMENSIONS

W 600 - mm
D 460 - mm
SH 370 - mm



small footstool - new quilting sides in
felt

DIMENSIONS

W 600 - mm
D 460 - mm
SH 370 - mm