



Diamante

Tavolo con piano allungabile disponibile in varie misure. Struttura disponibile in acciaio verniciato. Piano in melaminico, MDF, cristallo lucido, cristallo antigraffio e cristalceramica.



Finiture e materiali

Base



Acciaio Bianco



Acciaio Corda



Acciaio Grafite



Acciaio Marrone



Alluminio

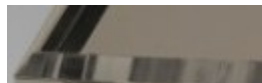
Piano



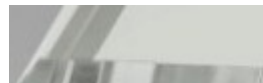
Melaminico
7 colori



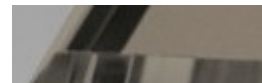
MDF LAccato
4 colori



Cristallo Lucido Corda



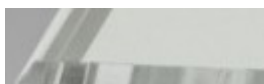
Cristallo Lucido Extrachiaro Bianco



Cristallo Satinato Antigraffio Corda



Cristallo Satinato Antigraffio Grafite



Cristallo Satinato Antigraffio Extrachiaro Bianco



Cristalceramica Piombo



Cristalceramica Savoia Cemento



Cristalceramica Savoia Antracite



Cristalceramica Marmo Emperador



Cristalceramica Oxide Bianco



Cristalceramica Oxide Corda



Cristalceramica Corten

Allunghe

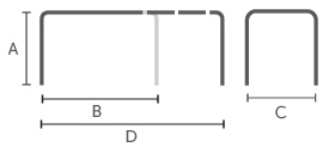


Melaminico
7 colori



MDF LAccato
4 colori

Dimensioni



Dati volumetrici

Peso 115

Volume 0.46 mc

Colli 5

Dimensione	A	B	C	D
	(cm) (inch)	(cm) (inch)	(cm) (inch)	(cm) (inch)
120x80	75 (29.5)	120 (47.2)	80 (31.5)	170 (66.9)
	75 (29.5)	140 (55.1)	90 (35.4)	190 (74.8)
140x90	75 (29.5)	160 (63)	90 (35.4)	160 (63)
	75 (29.5)	190 (74.8)	100 (39.4)	290 (114.2)

Gallery

