



■ E021MN0



■ E021MTW



■ E021MTW



■ E021MNV



■ E021MNV

ALL PICTURES SHOWN ARE FOR ILLUSTRATIVE PURPOSE ONLY. ACTUAL PRODUCT MAY VARY DUE TO PRODUCT ENHANCEMENT.

## SCHEMATICS

---

### RECTANGULAR FIXED



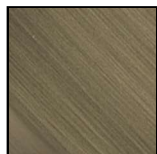
100cm x 180cm H 74cm  
39,37" x 70,87" H 29,13"

100cm x 260cm H 74cm  
39,37" x 102,36" H 29,13"

## FINISHINGS

---

### Frame finishing



BRASS

### Top finishing



SMOKED OAK

## TECHNICAL INFORMATION

---

DESIGNER: Tapinassi & Manzoni

Kendo Dining Table is a synonym of Italian craftsmanship excellency. With its elegant simplicity, clean and sober lines, it is an ideal piece of furniture that completes and enriches any environment. Its wooden structure is embellished with sophisticated metal inserts, that outline vertically and intersect elegantly on the top and follow on the outer side of the legs all the way down to the floor. The design and positioning of the legs allows maximum comfort for all guests.

Kendo Console, where functionality and aesthetics blend in in perfect harmony whilst the warmth of the wood structure and the brightness of metal create a game of contrasts. Metal that is used for the base and inside the legs, along with the elegant insert on the top gives a decorative touch to the item.

### PRODUCT DETAILS

Table with legs in oak and top in brushed open-pore oak, characterized with a pewter insert that embellish the design.

Console top in brushed open-pore smoked oak and legs in varnished metal on the inside and in solid wood on the external visible part.

#### Color variations:

Wood is a natural raw material. It presents therefore differences in color and structure.

Over time it may be subject to color variations, more or less evident, different depending on the structure of the surface or its position.

To delay this natural process, we recommend avoiding exposing wooden products to direct sunlight.

For the above, the natural variation of the woods, the variations in tonality of colors solicited by environmental or artificial lights, the minimal dimensional variations determined by anomalous rates of humidity or dryness, the veins, knots and other natural characteristics of wood products cannot be considered defects.

NOTES

---