



■ W02201X



■ W02201X



■ W02201X Details



■ W02202X

ALL PICTURES SHOWN ARE FOR ILLUSTRATIVE PURPOSE ONLY. ACTUAL PRODUCT MAY VARY DUE TO PRODUCT ENHANCEMENT.

## SCHEMATICS

---

### SIDEBOARD

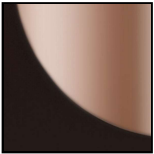


50cm x 117cm H 140cm  
19,69" x 46,06" H 55,12"

## FINISHINGS

---

### Frame finishing



Chocolate/Pink  
Gold

### Top finishing



CHOCOLATE

## TECHNICAL INFORMATION

---

DESIGNER: TAPINASSI & MANZONI

Orfeo, a collection of sideboards and storage units with a "new classic" flavour that stand out for the quality of the craftsmanship, the precious materials and the attention for detail. An elegant and refined design, with markings that combine modernity and tradition. Natuzzi confirms the value and excellence of Italian craftsmanship with unmistakable timeless elegance.

### PRODUCT DETAILS

- Base and structure in lathe tubular metal (diameter 25 mm), polished and painted with end decorations
- Structural intermediate elements in drawn, polished and painted metal (diameter 50 mm).
- Storage units in curved poplar plywood with outer parts in MDF (Medium Density Fiberboard) with a matt lacquered finish
- Door in MDF with full matt lacquer finish and handle detail in painted aluminium with a brass finish, or a glossy rose gold tone
- Door with wing-type opening and hinge with amortised closure.
- Shaped internal shelves with matt lacquer in the same colour as the exterior of the unit

NOTES

---