

ALL PICTURES SHOWN ARE FOR ILLUSTRATIVE PURPOSE ONLY. ACTUAL PRODUCT MAY VARY DUE TO PRODUCT ENHANCEMENT.

■ R882001XNA

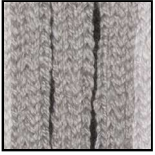
SCHEMATICS

RECTANGULAR

200cm x 300cm
78,74" x 118,11"

FINISHINGS

Color



GREY



GOLD

TECHNICAL INFORMATION

Designer: Elena Salmistraro

In tradition as well as the contemporary world, the rug is a decorative element that lifts the room in which it is placed, whilst contributing, through its texture and decorations, to the creation of an almost independent space, like a world in its own right.

Elena Salmistraro enhances the Posidonia collection for Natuzzi Italia with the Gorgonia rug, a project that showcases the excellence of Mediterranean Italy in the patterns, choice of materials and production techniques.

The choice of decorative motifs portrays a world made up of rigid, square, geometric elements inspired by the tuff quarries, in contrast with the organic, undulating and abstract elements of the sea that surrounds Apulia. This contrasting mixture of elements is captured in a balanced reinterpretation of a traditional element like the rug: the fibre with which it is produced comes, in fact, from recycled PET, focusing on sustainability that is increasingly featured in Natuzzi Italia's production choices, while the raised decoration is the result of traditional weaving techniques.

COMMERCIAL FEATURES & BENEFITS

- Rug with geometric design made by hand according to the crochet technique sewn on the backing of the carpet
- The yarn for the crochet is made from recycled plastic fibers (100% PET)
- Recycled PET is part of the category of materials called "performance", with a great capacity of resistance to water and wear
- The versatility of Gorgonia is expressed either indoors, where it can also be placed under a dining table or in a busy environment, and outdoors, on a balcony or terrace, thanks to its backing made of plastic material that does not deteriorate
- Outdoor use: products made of PET should preferably be used in partially covered areas (under curtains, pergolas or porches) and be set aside when not in use. Continuous exposure to chlorinated or salt water can damage the fiber
- Stain treatment:
 - 1) Remove the stain as quickly as possible with a clean cloth.
 - 2) Apply a solution consisting of one part mild detergent and three parts lukewarm water with a sponge or damp cloth.
 - 3) Rinse with a clean cloth and dab with a sponge or dry cloth.

NOTES
