



■ O888001XNA front/back



■ O888004XNA front/back



■ O888007XNA front/back



■ O888002XNA front/back



■ O888005XNA front/back



■ O888008XNA front/back



■ O888003XNA front/back



■ O888006XNA front/back



■ O888009XNA front/back

SCHEMATICS

QUADRATO PILLOW

52cm x 52cm
20,47" x 20,47"

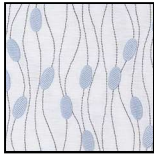
34cm x 52cm
13,39" x 20,47"

FINISHINGS

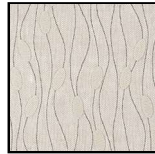
Finishing



BEIGE



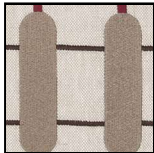
GREY



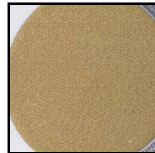
Greige



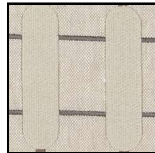
BORDEAUX



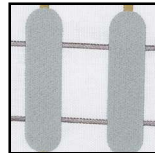
CAMEL



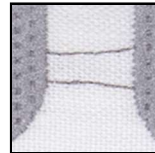
GOLD



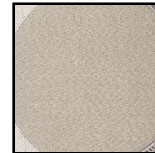
SAGE



Mint



lavander



Resin

TECHNICAL INFORMATION

Designer: Elena Salmistraro

The ultimate accessory which highlights and lifts the feel of the room. In the Posidonia collection for Natuzzi Italia, Elena Salmistraro dedicates special attention to the design of the Dysidea set of cushions.

The key feature of the project is the graphic design that adorns the front. Inspired by the relationship between nature and the Apulian seascape and contemporary lifestyle, the decorative motifs combine shapes inspired by tuff quarries, with the organic, undulating and abstract elements, of the sea that surrounds Apulia.

The colours and organic shapes of corals, sponges, algae and shells are taken from the seabed whereas the styles, colours and shapes of the countryside, stone and architecture, that have influenced and formed the Mediterranean lifestyle, come from the inland areas that Natuzzi Italia conveys to the world through its collections.

COMMERCIAL FEATURES & BENEFITS

- The new collection of decorative cushions comes in the moods 2021/2022 by Natuzzi Italia.
- Enriched with details and material elaboration, the cushions in two dimensions fully express the graphic richness of the world of Posidonia.

NOTES
