

Molteni & C

LOOP&CUT — PATRICIA URQUIOLA 2015

1—
2



Loop&Cut is Inspired by techniques used in knitting, and especially by the ribbing on pullover cuffs, used for these rugs as edging. A feature that gives the product character and a touch of originality. From the long-standing partnership between Molteni&C and Patricia Urquiola, a new family of products: three floor rugs together in an exclusive collection. The Spanish designer offers her creative interpretation of the values underpinning all Molteni&C's production, perfectly in tune with the refined but sober elegance that the brand represents. A meeting between the highest Western creativity and millennial Asian craftsmanship. Ancient hands interpret the designs, contributing with small personal variations which have always been the weavers prerogative.

FEATURES

Inspired by techniques used in knitting, and especially by the ribbing on pullover cuffs, used for these rugs as edging. A feature that gives the product character and a touch of originality.

General notes

- Copyright protected
- Products made in India
- Any irregularities should not be considered a defect but an element that emphasizes the distinctiveness of craft work
- A slight variation in colour may occur from dye lot to dye lot
- Variations of +/- 3% on measurements supplied or required are within standard

DATASHEET

REGISTERED
DESIGN

VII.2016

molteni.it

Dimensions in millimeters and inches. The right to discontinue and make changes is reserved. This information is based on the latest product information available at the time of printing.

TECHNICAL INFORMATION

Hand woven
Height fleece: mm. 6
Bamboo silk 50% + linen 50%

COLOURS

Milky _ Artic _ Stone _ Navy _ Tan

MAINTENANCE

Carpets cleaner - low power

CLEANING

Only professional cleaning water

Customised carpets are available prior feasibility verification by the Molteni Sales Dept.

Molteni & C

2—
2

DIMENSIONS

3000 x 2500
118 1/8" x 98 3/8"



TALC02

3000 x 4000
118 1/8" x 157 1/2"



TALC03

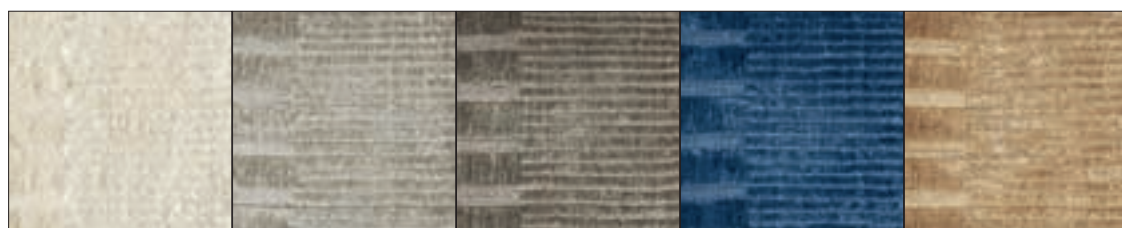
Milky

Artic

Stone

Navy

Tan



DATASHEET

REGISTERED
DESIGN

VII.2016

CARPET COLLECTION

Warning

LOOP&CUT HEM RANDOM

- 1 Natural fibres are sensitive to sunlight and humid places.
- 2 Open the carpet immediately after delivery to allow excess humidity to evaporate and swollen fibres to distend with air, thus preventing mould and creases from forming.
- 3 Carpets must never be shook vigorously to avoid weakening the weave.
- 4 Periodically turn the carpet to prevent localised wear in areas where it is walked on the most.
- 5 Never use adhesive tape directly on the front or back the carpet.

Advice for maintenance and cleaning

LOOP&CUT

- 1 It is necessary to wash the product for the first time soon after it is purchased to eliminate any residue of finishing processes. This washing will make the surface softer and more brilliant.
- 2 Beat the carpet manually or use a vacuum cleaner on low power. Avoid the edges to prevent the fibre from being damaged, which weakens the edges. Make sure that the vacuum cleaner attachment does NOT have rotating brushes inside, because these will tear the pile of the carpet.
- 3 Clean the surface of the carpet with a solution of white vinegar diluted with cold water, in a 1:6 ration and use a vaporiser to distribute it over the surface. This natural degreaser will also revive colours and soften the carpet, bringing new shine to the viscose fibre. Comb the pile with a soft brush (similar to those used to clean shoes). After this process, the carpet will be slightly damp but it will dry quickly: air the carpet or use cold air to dry it. It is important to not leave residual humidity in the carpet fibres, which in particular cases could cause mould to form.

HEM

An efficient vacuum cleaner is the best tool. Use regularly to remove all of the dirt and dust that deposits on the carpet. Note: it is possible that a thread come loose from the carpet. This is absolutely normal. Wool and/or silk carpets always present a few excess fibres, which gradually disappear. To remove them more rapidly, we advise running the vacuum cleaner every day during the period when the carpet is new. To eliminate dust more effectively, the vacuum cleaner must be run over the carpet in on direction at a time.

RANDOM

- 1 The carpet has a special non-slip mesh applied for safety reasons and to preserve the floor and the integrity of the carpet itself.
- 2 For ordinary cleaning, use only the special Altai vacuum cleaner foot provided (in the Maintenance Kit) with a universal attachment that can fit onto your vacuum cleaner's tube. Set the motor power on medium/low.
- 3 Move the vacuum cleaner only in the direction of the pile, never against it.
- 4 It is possible that in the first weeks, the carpet will produce a small amount of fuzz: this will stop in a short period of time.
- 5 It is possible that during the first few weeks, a few knots could come to the surface of the carpet. Just cut the part above the surface with a pair of scissors. The carpet is made of several hundred thousand hand-tied knots, therefore it is no problem if a few come undone.

Rules for stain removal

LOOP&CUT

- 1 Stains should be removed immediately if possible, by blotting with a damp sponge, without rubbing.
- 2 Have the carpet washed at a specialised professional centre. It must be washed flat, with cold water at least twice per year. Washing is not only for hygiene. It is also important for preserving the fibres, which regain their softness, lively colour and brilliance.

HEM

- 1 We advise removing stains immediately. Proceed carefully to avoid damaging the fibres. To remove wet stains, blot them first with absorbent kitchen paper (paper towels). Then immerse a cloth or sponge in warm water. Dampen the spot and blot, and repeat this process until the stain is completely removed. For greasy stains and other difficult spots, use pH neutral detergents without whiteners. When the stain has been eliminated, carefully remove all traces of the detergent to restore the natural characteristics of the fibre.
- 2 Have the carpet washed at a specialised professional centre. It must be washed flat, with cold water at least twice per year. Washing is not only for hygiene. It is also important for preserving the fibres, which regain their softness, lively colour and brilliance.

RANDOM

Have the carpet washed at a specialised professional centre. It must be washed flat, with cold water at least twice per year. Washing is not only for hygiene. It is also important for preserving the fibres, which regain their softness, lively colour and brilliance.