

LENNON

DESIGN RODOLFO DORDONI



Gambe: in metallo a sezione rettangolare 100x50 mm, montate mediante asole incassate al top e viti a scomparsa. Scivolante protettivo in feltro.

Piano: in legno tamburato spessore 50 mm.

Finiture piano:

- laccato lucido nei colori Bianco, Betulla, Sand, Tortora, Moka, Grigio Stone, Grigio Elephant o Nero;

- rovere naturale spazzolato;

- rovere tinto Grigio a poro aperto;

- rovere laccato Moka o Nero a poro aperto.

Finiture gambe:

- metallo finitura cromo;

- metallo finitura Black-Nickel.

Legs: in metal, rectangular section 100x50 mm, assembled through slots built into the top and flush screws. Protective felt glides.

Top: made from honeycomb wood 50 mm in thickness.

Top finishes:

- glossy lacquered in White, Birch Grey, Sand, Dove Grey, Moka, Stone Grey, Elephant Grey or Black;

- brushed natural oak;

- open pore, Grey stained oak;

- open pore, Moka or Black lacquered oak.

Legs finishes:

- chrome-plated metal finish;

- Black-Nickel metal finish.

Beine: Metallbeine mit rechteckigem Querschnitt von 100x50 mm, die anhand von in das Top eingelassener Längslöcher und verdeckt liegender Schrauben montiert werden. Filzgleiter.

Tischplatte: aus Sperrholz, 50 mm.

Ausführungen der Platte:

- Hochglanzlackiert in den Farben Weiß, Birke, Sand, Taubenblau, Mokka, Stein-grau, Elephant-Grau oder Schwarz;

- gebürstete Natureiche;

- offenporig, grau gebeizte Eichenplatte;

- offenporig, mokka oder schwarz lackierte Eichenplatte.

Ausführungen der Beine:

- aus Metall Chrom Finish;

- aus Metall Black-Nickel Finish.

Piètement : en métal de section rectangulaire 100x50 mm monté à l'aide de boutonsnières encastrées dans le plateau et de vis escamotables. Anti-glisserment de protection en feutre.

Plateau : bois structuré en nid d'abeille de 50 mm d'épaisseur.

Finitions du plateau :

- laqué brillant dans les couleurs Blanc, Bouleau, Sable, Tourterelle, Moka, Gris Stone, Gris Éléphant ou Noir;

- chêne naturel brossé;

- chêne à pore ouvert teinté dans les couleurs Gris;

- chêne à pore ouvert laqué dans les couleurs Moka ou Noir.

Finitions du piètement :

- en métal finition chromé;

- en métal finition Black-Nickel.

**FINITURA GAMBE
LEGS FINISH**

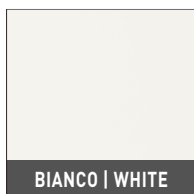
METALLO | METAL



CROMO | CHROME

**FINITURE PIANO
TOP FINISHES**

LACCATO LUCIDO | GLOSSY LACQUERED



BIANCO | WHITE



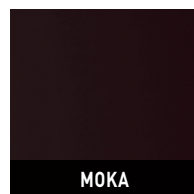
BETULLA | BIRK GREY



SAND



TORTORA | DOVE GREY



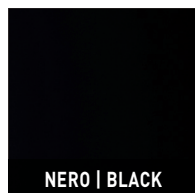
MOKA



**GRIGIO STONE
STONE GREY**



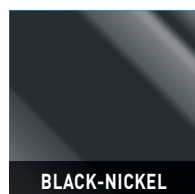
**GRIGIO ELEPHANT
ELEPHANT GREY**



NERO | BLACK

**FINITURA GAMBE
LEGS FINISH**

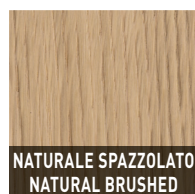
METALLO | METAL



BLACK-NICKEL

**FINITURA PIANO
TOP FINISH**

ROVERE | OAK



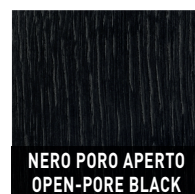
**NATURALE SPAZZOLATO
NATURAL BRUSHED**



**TINTO GRIGIO
STAINED GREY**

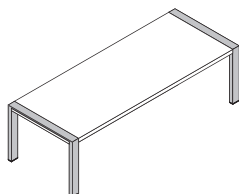
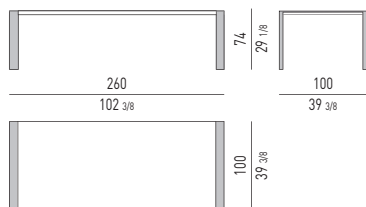
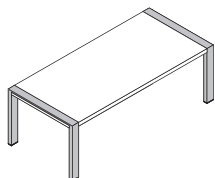
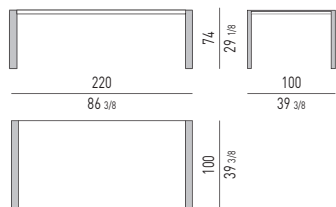
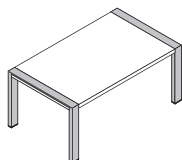
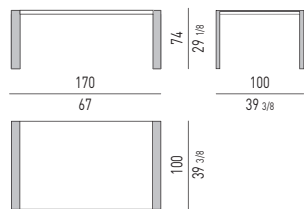
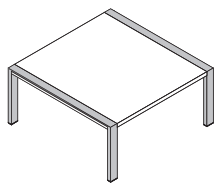
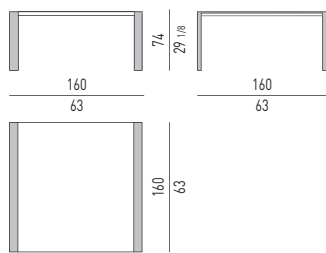


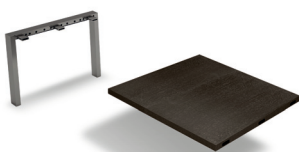
**MOKA PORO APERTO
OPEN-PORE MOKA**



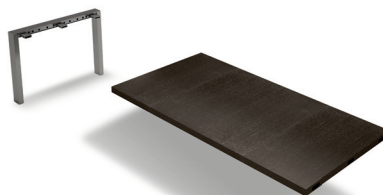
**NERO PORO APERTO
OPEN-PORE BLACK**

Minotti

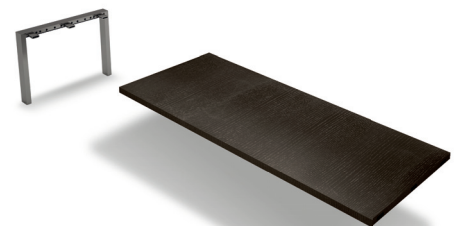




CM 100X100
INCHES 70^{7/8}X19^{5/8} H23^{5/8}

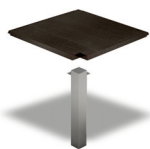


CM 160X100
INCHES 70^{7/8}X19^{5/8} H23^{5/8}



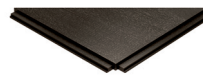
CM 250X100
INCHES 70^{7/8}X19^{5/8} H23^{5/8}

SCHEMA MODULI PER COMPOSIZIONI "ANGOLO" ASSEMBLING SCHEME FOR "CORNER" COMPOSITIONS



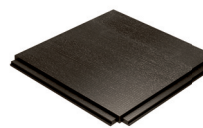
CM 100X100
INCHES 70^{7/8}X19^{5/8} H23^{5/8}

SCHEMA MODULI PER COMPOSIZIONI "45°" ASSEMBLING SCHEME FOR "45°" COMPOSITIONS



CM 100X100
INCHES 70^{7/8}X19^{5/8} H23^{5/8}

SCHEMA MODULI PER COMPOSIZIONI "T" | ASSEMBLING SCHEME FOR "T" COMPOSITIONS



CM 100X100
INCHES 70^{7/8}X19^{5/8} H23^{5/8}