



# Oplà

Oplà tavolo allungabile disponibile in diverse misure. Struttura disponibile in acciaio satinato oppure verniciato. Piano disponibile in cristallo, vetro antigraffio o cristalceramica. Allunghe abbinare.



## Finiture e materiali

### Base



Acciaio Bianco



Acciaio Corda



Acciaio Grafite



Acciaio Marrone

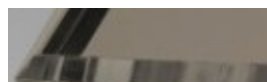


Alluminio

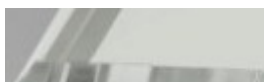


Satinato

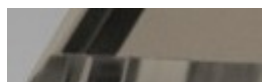
### Piano



Cristallo Lucido Corda



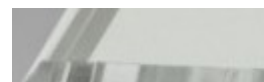
Cristallo Lucido Extrachiaro Bianco



Cristallo Satinato Antigraffio Corda



Cristallo Satinato Antigraffio Grafite



Cristallo Satinato Antigraffio Extrachiaro Bianco



Cristalceramica Piombo



Cristalceramica Savoia Cemento



Cristalceramica Savoia Antracite



Cristalceramica Marmo Emperador



Cristalceramica Oxide Bianco

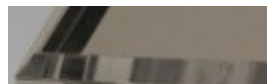


Cristalceramica Oxide Corda

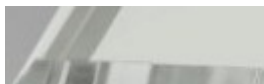


Cristalceramica Corten

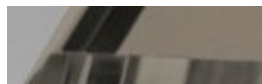
### Allunghe



Cristallo Lucido Corda



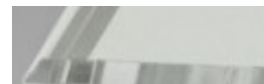
Cristallo Lucido Extrachiaro Bianco



Cristallo Satinato Antigraffio Corda



Cristallo Satinato Antigraffio Grafite



Cristallo Satinato Antigraffio Extrachiaro Bianco



Cristalceramica Piombo



Cristalceramica Savoia  
Cemento



Cristalceramica Savoia  
Antracite



Cristalceramica Marmo  
Emperador



Cristalceramica Oxide  
Bianco

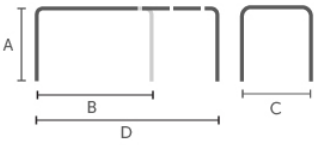


Cristalceramica Oxide Corda



Cristalceramica Corten

## Dimensioni



Dimensione	A	B	C	D
	(cm)	(cm)	(cm)	(cm)
	(inch)	(inch)	(inch)	(inch)
<b>110x70</b>	75	110	70	160
	(29.5)	(43.3)	(27.6)	(63)
<b>130x80</b>	75	130	80	190
	(29.5)	(51.2)	(31.5)	(74.8)
<b>160x90</b>	75	160	90	220
	(29.5)	(63)	(35.4)	(86.6)

## Dati volumetrici

**Peso** 98  
**Volume** 0.47 mc  
**Colli** 3

## Gallery

