

# BONALDO

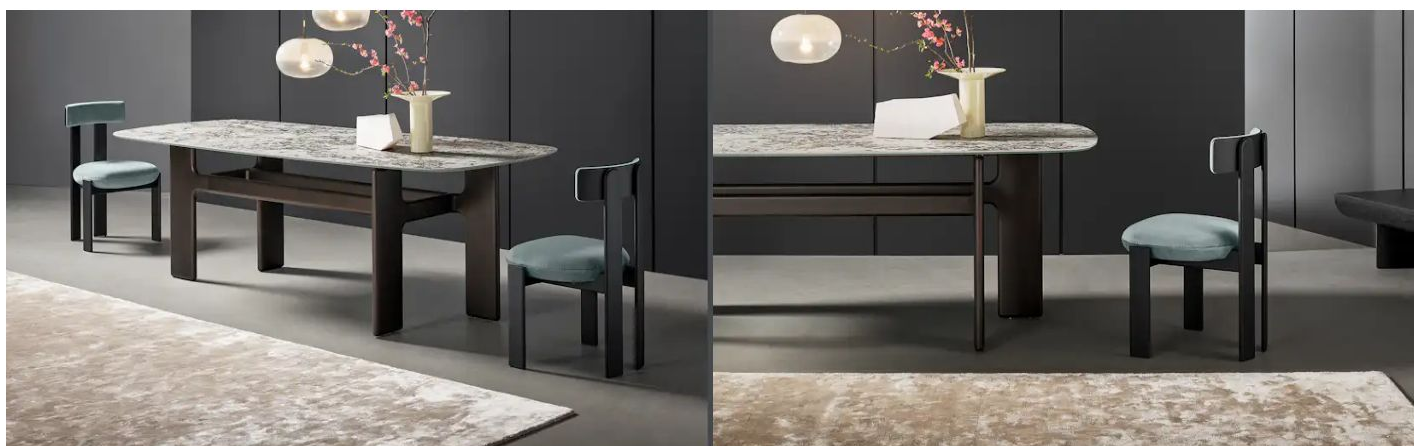
## Pi chair

Designer: **Alain Gilles**

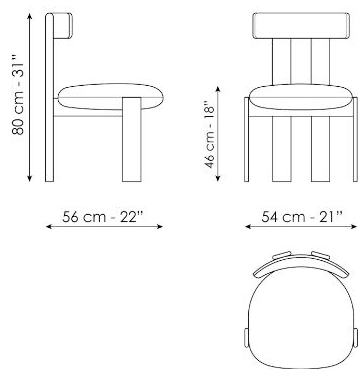


Designed by Alain Gilles, the Pi chair has an iconic style and a graphic and rigorous frame which combines minimal style and maximum comfort. The soft and rounded cushion of the seat almost seems to merge with the solid wood frame, while the delicately curved backrest evokes the shape of the mathematical sign "Pi", harmoniously combining all the

elements. The rear legs, with their rounded ends, create an almost graphic connection with the upper line of the backrest. The Pi chair fully reveals its character when it is positioned around a table, becoming the fulcrum of the space with a distinctive and vigorous presence.



# Технические данные



## Pi chair

Ширина: 56cm

Глубина: 54cm

Высота: 80cm

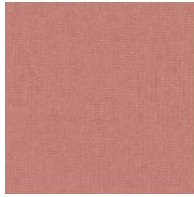
# Finishes

## ОБИВКА

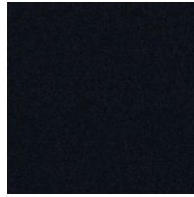
Ткань - 900



Ткань - Azimut  
9B02



Ткань - Azimut  
9B08



Ткань - Azimut  
9B17



Ткань - Azimut  
9B22



Ткань - Azimut  
9B26



Ткань - Azimut  
9B36



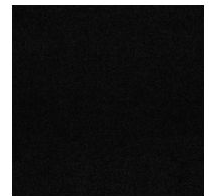
Ткань - Azimut  
9B39



Ткань - Azimut  
9B42



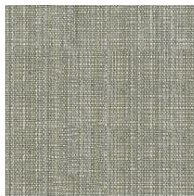
Ткань - Azimut  
9B44



Ткань - Azimut  
9B48



Fabric - Newco  
9B65



Fabric - Newco  
9B66



Fabric - Newco  
9B67



Fabric - Newco  
9B68



Fabric - Newco  
9B69



Fabric - Newco  
9B70



Fabric - Newco  
9B71

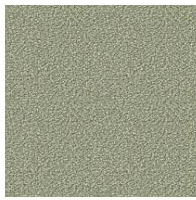


Fabric - Newco  
9B72

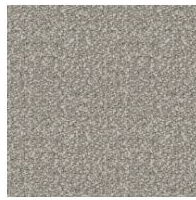
Ткань - Must



Ткань - Boemian  
MC40



Ткань - Boemian  
MC43



Ткань - Boemian  
MC46



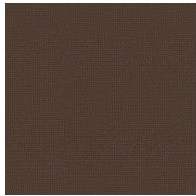
Ткань - Boemian  
MC47



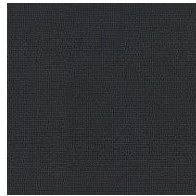
Ткань - Boemian  
MC49



Ткань - Rico  
MA02



Ткань - Rico  
MA04



Ткань - Rico  
MA07



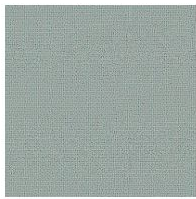
Ткань - Rico  
MA09



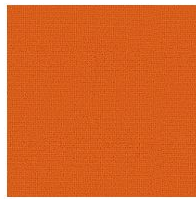
Ткань - Rico  
MA11



Ткань - Rico  
MA20



Ткань - Rico  
MA22



Ткань - Rico  
MA39



Ткань - St. Moritz  
MC60



Ткань - St. Moritz  
MC61



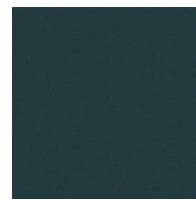
Ткань - St. Moritz  
MC62



Ткань - St. Moritz  
MC67



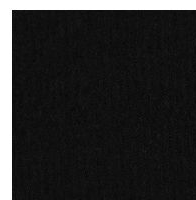
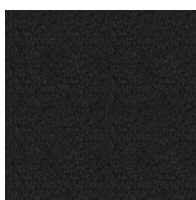
Ткань - St. Moritz  
MC69



Ткань - St. Moritz  
MC76



Ткань - St. Moritz  
MC81





Ткань - St. Moritz  
MC83

Ткань - St. Moritz  
MC85



Ткань - Flora  
MD30



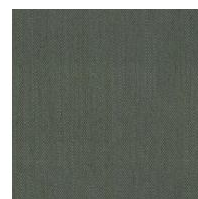
Ткань - Flora  
MD31



Ткань - Flora  
MD32



Ткань - Flora  
MD34



Ткань - Flora  
MD35



Ткань - Flora  
MD37



Ткань - Flora  
MD39



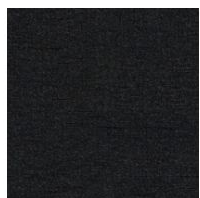
Fabric - Lucky  
MD58



Fabric - Lucky  
MD59



Fabric - Lucky  
MD60



Fabric - Lucky  
MD61

Ткань - Special



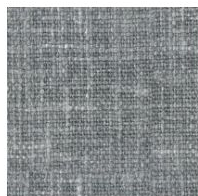
Ткань - Ваia  
SP45



Ткань - Ваia  
SP48



Ткань - Ваia  
SP50



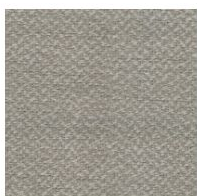
Ткань - Ваia  
SP51



Ткань - Ваia  
SP52



Fabric - Jurga  
SP53



Fabric - Jurga  
SP54



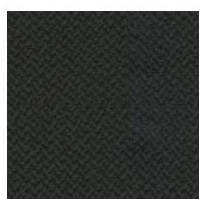
Fabric - Jurga  
SP55



Fabric - Jurga  
SP56



Fabric - Jurga  
SP57



Fabric - Jurga  
SP58

Ткань - 800



Ткань - Pastello  
8D69



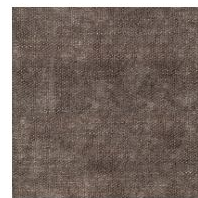
Fabric - Pastello  
8D68



Fabric - Pastello  
8D67



Fabric - Pastello  
8D66



Fabric - Pastello  
8D65



Fabric - Pastello  
8D64



Fabric - Pastello  
8D63



Fabric - Pastello  
8D62



Fabric - Pastello  
8D61



Fabric - Pastello  
8D60



Fabric - Pastello  
8D59



Fabric - Pastello  
8D58



Fabric - Pastello  
8D57



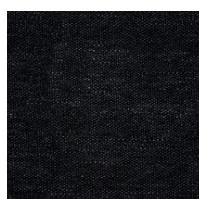
Fabric - Pastello  
8D56



Fabric - Pastello  
8D55



Fabric - Pastello  
8D54



Fabric - Pastello  
8D53



Fabric - Pastello  
8D52

## Ткань - Class



Fabric - Hyle  
EB55



Fabric - Hyle  
EB56



Fabric - Hyle  
EB57



Fabric - Hyle  
EB58



Fabric - Hyle  
EB59



Fabric - Hyle  
EB60



Fabric - Hyle  
EB61



Fabric - Hyle  
EB62



Fabric - Hyle  
EB63



Fabric - Hyle  
EB64

---

## НОЖКИ

### дерево



Массив дерева  
Американский орех



Массив дерева  
Ясень цвет carbone



Solid wood  
Honey-coloured ash

---

Materials, fabrics, leathers, colors and finishes are approximate and may slightly differ from actual ones. You can find the complete collection of Bonaldo fabrics and leathers on the website



