

BONALDO

One Console

Designer: **Alain Gilles**

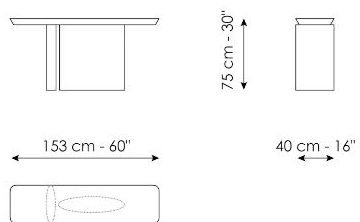


The One Console presents an unexpected, unique and in some ways imperfect piece of architecture that recalls the Dolmens of prehistoric times, which were created by stacking irregular stones in a way that was apparently random and precarious. It is as if the elements that make up the console were not intended to be together, but had instead shifted unexpectedly away from their original position, thereby giving life to a contemporary and recognizable accessory with a striking top and unusual bases. A barely visible opening between the curved modules that form the base

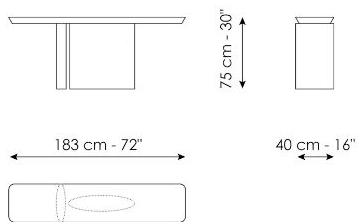
allows an interplay of light that illuminates the different profiles of the console's supporting columns. The legs are very close to each other, so much so that from different perspectives the distance is imperceptible; this generates visual instability and a surprising dynamic effect. At the same time, the interplay between the legs gives direction to the console, and therefore to the space in which it is placed. These unusual features give the product a personal richness, making it unique and particularly unexpected.



Технические данные



Ширина: 153cm
Глубина: 40cm
Высота: 75cm



Ширина: 183cm
Глубина: 40cm
Высота: 75cm

Finishes

СТОЛЕШНИЦА

дерево



Шпонированное
дерево
Черный орех



Шпонированное
дерево
Дуб
брашированный
цвета угля



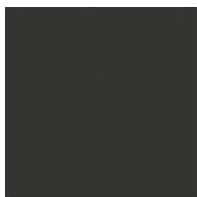
Шпонированное
дерево
Honey-coloured oak

ОСНОВАНИЕ

Металл категория Plus



Крашенный металл
Матовый
бронзовый



Крашенный металл
Матовый свинец

MONOMATERIAL - СТОЛЕШНИЦА, ОСНОВАНИЕ

дерево



Шпонированное
дерево
Черный орех

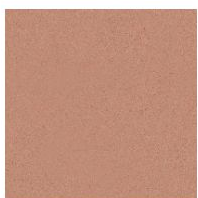


Шпонированное
дерево
Дуб
брашированный
цвета угля



Шпонированное
дерево
Honey-coloured oak

Глина



Глина в ручной
отделке шпателем
Terracotta



Глина в ручной
отделке шпателем
Glacier



Глина в ручной
отделке шпателем
Terre



Глина в ручной
отделке шпателем
Neige



Глина в ручной
отделке шпателем
Graphite



Глина в ручной
отделке шпателем
Perle

Materials, fabrics, leathers, colors and finishes are approximate and may slightly differ from actual ones. You can find the complete collection of Bonaldo fabrics and leathers on the website

