

# BONALDO

## Flac

Designer: **Fabrice Berrux**

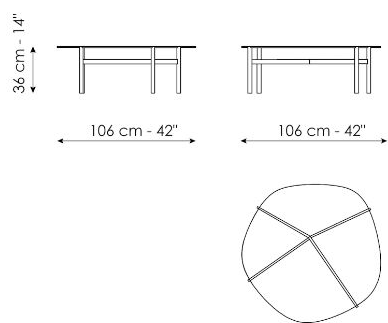


Flac is the name of the new collection of coffee tables designed by Fabrice Berrux for Bonaldo, available in three heights and three diameters (Flac low, Flac medium, Flac high). The characterizing element is the fused and tempered glass top which gives the effect of the surface of water: the top floats on a slender metal base which almost appears to be the mounting for a precious stone. The different heights at which the tables are offered allow the creation of interesting

compositions, characterized by a subtle interplay of superimpositions which highlight different shades of colour in the intersection of the glass. In the medium and low versions, the top is also available in wood, ceramic and marble, for a mix & match of materials that make Flac a versatile and perfect element for every style. The metal base features an cross-joint between the legs, an element of craftsmanship that enhances the lightweight design of the product.

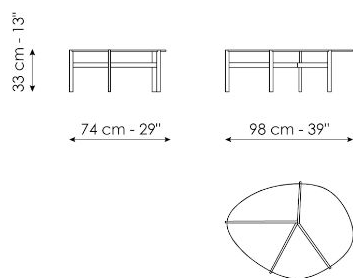


# Технические данные



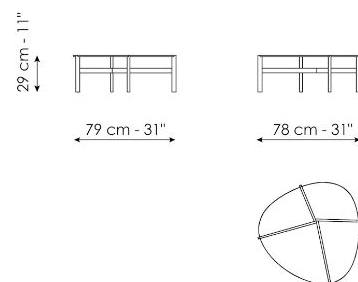
## Flac high

Ширина: 106cm  
Глубина: 106cm  
Высота: 36cm



## Flac medium

Ширина: 98cm  
Глубина: 74cm  
Высота: 33cm



## Flac low

Ширина: 79cm  
Глубина: 78cm  
Высота: 29cm

# Finishes

## СТОЛЕШНИЦА

дерево



Шпонированное  
дерево  
Черный орех



Шпонированное  
дерево  
Дуб цвета угля

Мрамор



Мрамор  
Carrara



Мрамор  
Calacatta



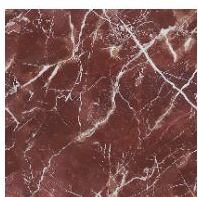
Мрамор  
Emperador



Мрамор  
Marquina



Мрамор  
Saint Denis



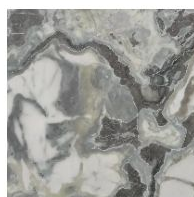
Мрамор  
Rosso Carpazi



Мрамор  
Fior di bosco



Мрамор  
Travertino Romano



Мрамор  
Dover White

## керамика



Матовая керамика  
Grigio Ardesia



Глянцевая  
керамика  
Calacatta



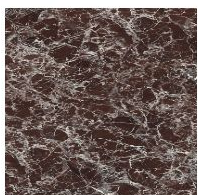
Матовая керамика  
Laurent



Керамика в  
шелковой отделке  
Calacatta macchia  
vecchia



Глянцевая  
керамика  
Imperial grey



Глянцевая  
керамика  
Rosso imperiale



Глянцевая  
керамика  
Black Onyx



Глянцевая  
керамика  
Mountain peak

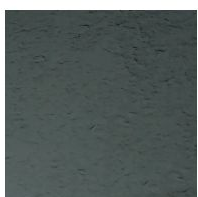


Матовая керамика  
Alaska White



Матовая керамика  
Augusta

## стекло



закаленное литое  
стекло  
Копченое



закаленное литое  
стекло  
Бронзированное

# ОСНОВАНИЕ

Металл категория Plus



Крашенный металл  
Матовый  
бронзовый



Крашенный металл  
Матовый свинец

---

Materials, fabrics, leathers, colors and finishes are approximate and may slightly differ from actual ones. You can find the complete collection of Bonaldo fabrics and leathers on the website