

by NATUZZI
DIVANI & DIVANI



■ O174003XOF / O174003XDD

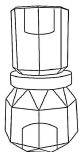


■ O174004XOF / O174004XDD

ALL PICTURES SHOWN ARE FOR ILLUSTRATIVE PURPOSE ONLY. ACTUAL PRODUCT MAY VARY DUE TO PRODUCT ENHANCEMENT.

SCHEMATICS

Candle holder



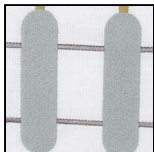
7cm x 7cm H 13cm
2,76" x 2,76" H 5,12"

FINISHINGS

Finishing



ROSE



Mint



Violet

TECHNICAL INFORMATION

The candle holders from the “Moonlight Collection” are made of K9 crystal which has exceptional physical characteristics. It has a high refractive index, clarity, hardness, and consistency, far above resin. K9 crystal offers durability and high quality at a good price. It is lead-free and can be easily polished like any glass.

The collection includes 12 types of items of different sizes, in multiple colours, selected by our Style Centre, in line with Natuzzi Editions creative moods

NOTES
